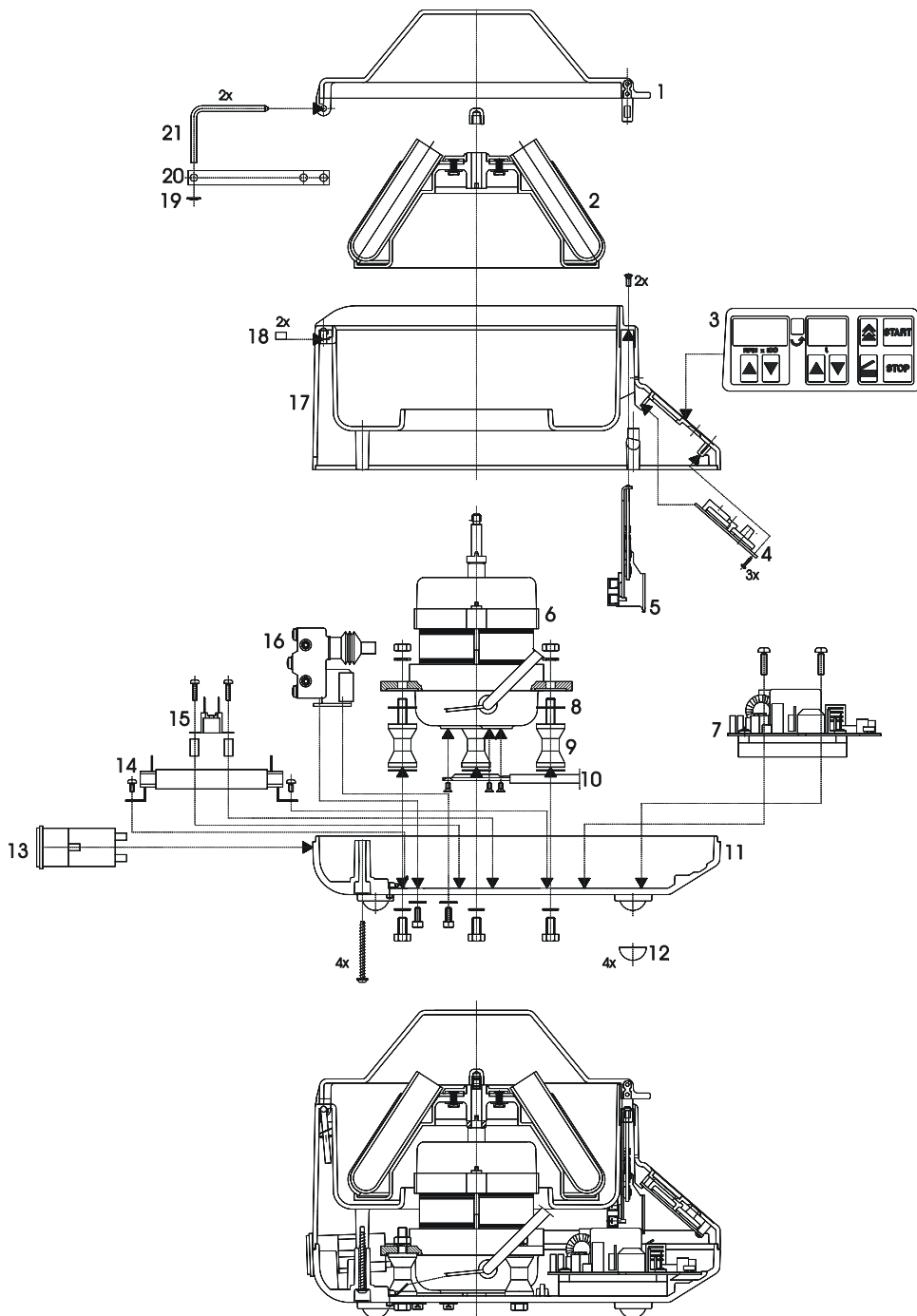


**Skeleton construction of EBA 20S**



- 1 Lid complete.....E3035
- 2 Rotor.....E1624
- 3 Covering foil for.....E1665 control panel
- 4 Control panel.....E1422
- 5 Lid lock.....20161
- 6 Motor.....OCM-33F
- 7 Power board.....52018
- 8 Anti-twist device.....E604
- 9 Rubber-metal.....0239 bearing
- 10 Speed sensor.....E3081
- 11 Housing lower part
- 12 Rubber foot.....E1659
- 13 Power Inlet.....E1661
- 14 Brake resistor.....E849
- 15 Overtemperature fuse
- 16 Imbalance switch.....E2527
- 17 Housing upper part
- 18 Friction rubber.....E1667
- 19 Lock washer
- 20 Flat spring
- 21 Hinge bolt.....E1668