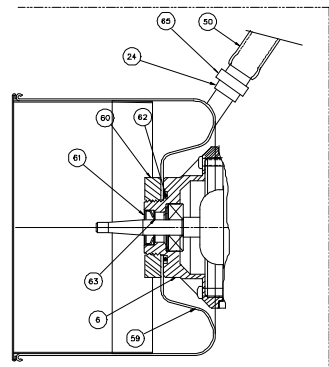
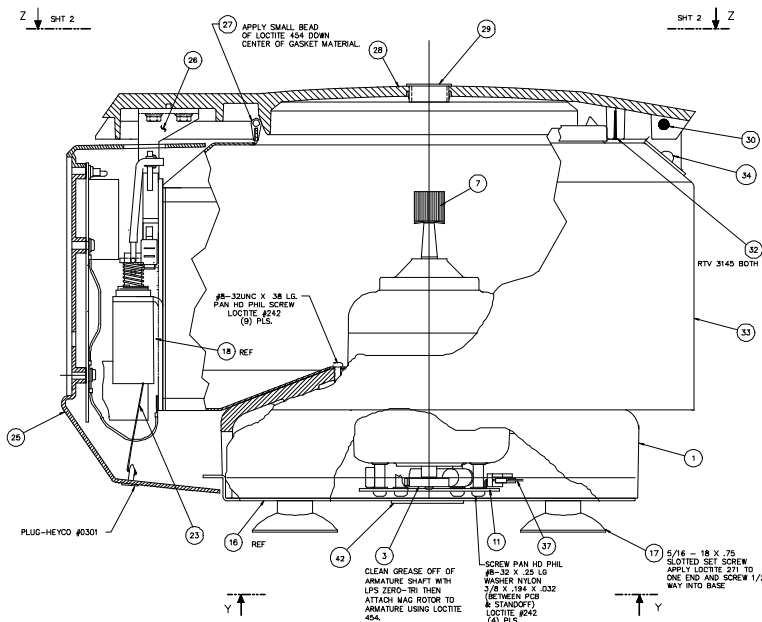
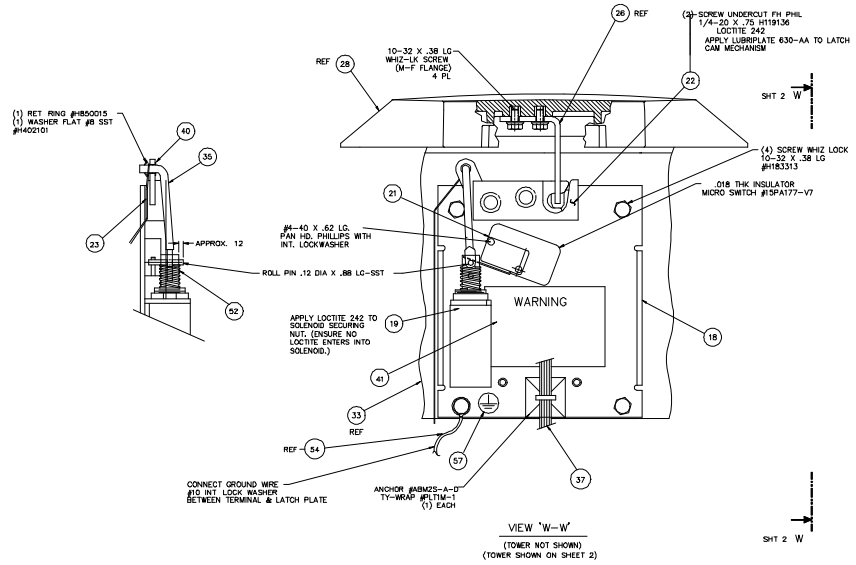
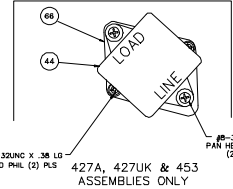
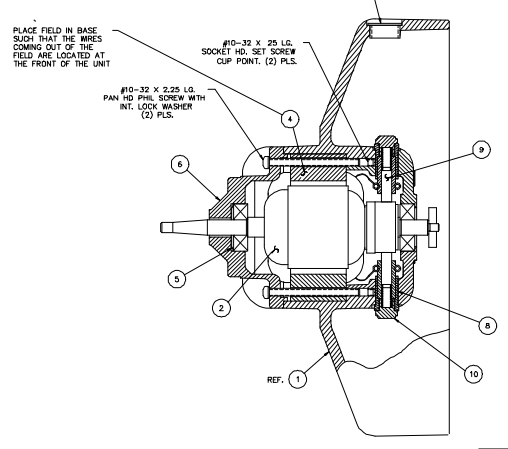


THIS DRAWING IS CONFIDENTIAL, THE PROPERTY OF I.E.C., AND MAY NOT BE REPRODUCED IN ANY FORM WITHOUT THE WRITTEN CONSENT OF THE OWNER.

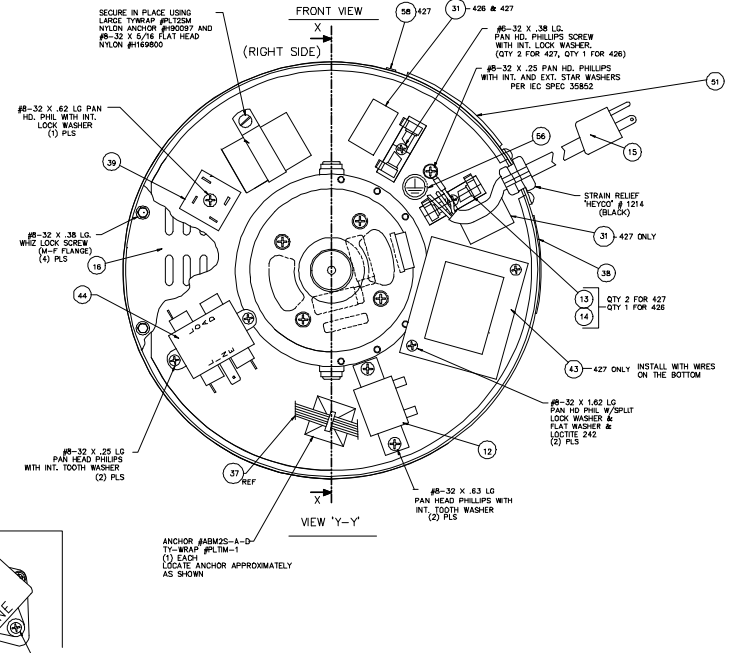
REVISIONS					
REV	ZONE	BY	DATE	ECO	APP'D / DATE
8		P.L.	1/26/96	3378	RAD 1/29/96
C		P.L.	1/6/96	3371	JAB 5/9/96
0		P.L.	5/17/96	3543	RAD 5/28/96
1		P.L.	8/23/96	3566	JAB 9/15/96
2		P.L.	10/4/96	3754	KFC 10/29/96
3		T.M.E.	1/21/97	3851	RAD 1/29/97
4		PL	3/12/97	3888	DMM 3/19/97
5		TME	8/27/97	4169	RAD 10/15/97
6		PL	12/30/97	4328	RAD 1/5/98
7		PL	1/13/98	4343	RAD 2/11/98
8		TME	7/9/98	4558	RAD 7/23/98
9		PL	9/17/98	4731	KMM 10/22/98
10		PL	10/26/98	4777	KMM 11/19/98
11		PL	4/8/99	4883	TJS 4/23/99
12		PL	8/18/99	5037	IAN 8/26/99
13		PL	12/29/98	5244	RAD 1/13/00
14		PL	8/1/00	5494	RAD 8/16/00
15		PL	9/29/00	5572	RAD 10/16/00
16		PL	1/12/01	5688	RAD 1/29/01
17		PL	12/28/01	5744	RAD 1/3/02
18		PL	10/23/03	6001	RAD 10/29/03



DRAINING CHAMBER ASSY FOR 452 & 453 ONLY  
SECTION 'X-X'

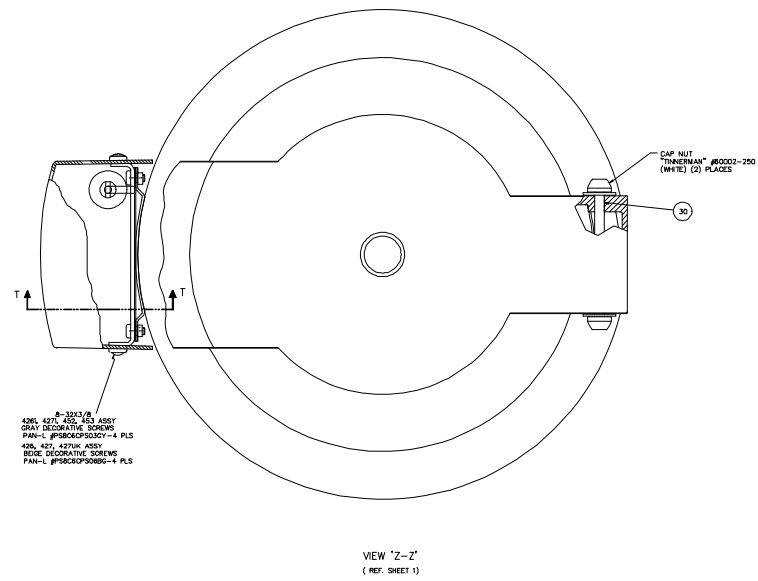
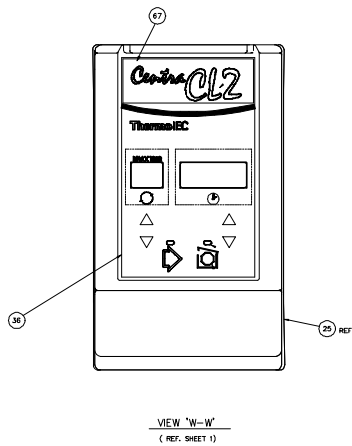
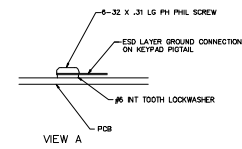
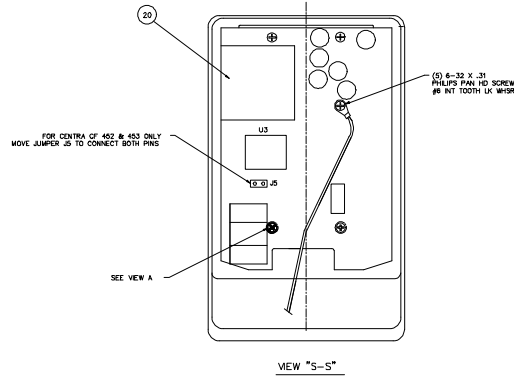
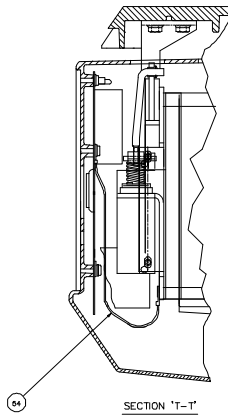


427A, 427UK & 453 ASSEMBLIES ONLY



MATERIAL:		PARTS LIST SEE PL-	
FINISH:		INTERNATIONAL EQUIP. CO.	
UNLESS OTHERWISE SPECIFIED DIMENSIONS ARE IN INCH. DIMENSIONS ARE AFTER FINISH. REMOVE ALL BURRS & SHARP EDGES. SURFACE QUALITY: ✓		TITLE: CENTRA CL2 ASSEMBLY	
NEXT ASSY	CENTRA CL2 USED ON	SIZE: CODE ID. NO.	DRAWING NO.
APPLICATION	BY DATE	E	426A
BY DATE	1/16/96	SCALE: 1=1	SHEET 1 OF 3
CHECKED H.L.R.	10/8/00	3 PLACE DEC. 1/18/96	REV. 18
APPROVED RAD	1/18/96	± .02 ± .02 ± 1/2	

THIS DRAWING IS CONFIDENTIAL, THE PROPERTY OF I.E.C., AND MAY NOT BE REPRODUCED IN ANY FORM WITHOUT THE WRITTEN CONSENT OF THE OWNER.



INTERNATIONAL EQUIP. CO.			
TITLE: CENTRA CL2 ASSEMBLY			
SIZE:	CODE ID. NO.	DRAWING NO.	REV.
E		426A	18
SCALE: NONE			SHEET: 2 OF 3

4

3

2

1

THIS DRAWING IS CONFIDENTIAL, THE PROPERTY OF I.E.C., AND MAY NOT BE REPRODUCED IN ANY FORM WITHOUT THE WRITTEN CONSENT OF THE OWNER.

REVISIONS					
REV	ZONE	BY	DATE	ECO	APP'D DATE

ASSY CL2 & CF			
ITEM QTY	PART NO.	DESCRIPTION	REMARKS
1			
2	48411	ARMATURE, MOTOR	
3	50344	ROTOR, MAGNETIC (6 POLE PAIR)	
4	2782	FIELD, MOTOR	
5	41778	WASHER, SPRING	ASSOCIATED SPRING # 51164-209
6			
7	65637	NUT, ROTOR	
8	3037	BRUSH HOLDER	
9	1780A	BRUSH/SPRING	
10	9036	CAP, BRUSH	
11	44418	ASSEMBLY, PC. BOARD CL2 INTERLOCK	
12			
13	55125	FUSE HOLDER	BUSS #2499
14			
15			
16	65610	PANEL, BASE	
17	50148	SUCTION FOOT	
18	65617A	BRACKET, CONTROL	
19	50634B	SOLENOID	
20	44416	DIGITAL TIMER/PWM MOTOR DRIVE PCB, CL2	
21	43754	SWITCH	V3L-1108-D8
22	65721	LATCH	
23	1.67	COML POLYESTER 50LB. TEST FISHING LINE	
24			
25			
26	65614	STRIKER, LATCH	
27	50778	GASKET, COVER	
28			
29			
30	65613	PIN, HINGE	
31			
32	65622	SCREEN, COVER	
33	65606	GUARD BOWL	
34	43782	OROMMET, RUBBER	MINOR RUBBER, #2B-3053
35	50635	LINK ARM	
36			
37	65616-A	WIRING HARNESS, MAIN	
38			AC
39	61534	BRIDGE DIODE	
40	COML	NYLINER	THOMPSON NYLINER 3L2-FF
41	65598	LABEL, WARNING	
42	45996	LABEL, WARNING	
43			
44			
45	1M426	OPERATION MANUAL	
46	P0600	CL2 TOP PACK	
47	P0601	CL2 BOTTOM PACK	
48	P0312	CARTON	
49	P0180	POLIBAG	
50			
51	41170	LABEL, CAUTION - HIGH LEAKAGE	
52	50787	SOLENOID SPRING	CE LABEL FOR CARTON
53			
54	50605D	GROUND WIRE	
55	COML	NYLON WASHER #10 3/8 X 1/4 X .032	H401003
56	50127	LABEL, PROTECTIVE EARTH GROUND SYMBOL	
57	50128	LABEL, SECONDARY CHASSIS GROUND SYMBOL	
REF	10857	SCHEMATIC WIRING DIAG. CL2	

ASSY CL2			CATALOG NUMBER
ITEM QTY	PART NO.	DESCRIPTION	REMARKS
			426A
1	65605A	BASE MACHINED	
6	42470A	TOP CAP (MACHINED)	
12	60076	RESISTOR 30W 1000 OHMS	
14	40340	FUSE, SLO-BLO 4A	
15	47415	POWER CORD	
25	65711A	TOWER, CONTROL CL2	
28	65604A	COVER	
29	48116	PLUG, WINDOW	
31	40346B	LABEL, FUSE 4A	
36	50788A	MEMBRANE PANEL	
38	COML	DATA PLATE	REF DWG 66001AC
44	62608	LINE FILTER	SAE #GA1A-8

ASSY CL2 INT			CATALOG NUMBER
ITEM QTY	PART NO.	DESCRIPTION	REMARKS
			427A
1	65605A	BASE MACHINED	
6	42470A	TOP CAP (MACHINED)	
12	60076	RESISTOR 30W 1000 OHMS	
14	42517	LITTLE FUSE 1.25A 3AG SLO-BLO	#3131.25 OR EQUIV
15	44392	POWER CORD	
25	65711A	TOWER, CONTROL CL2	
28	65604A	COVER	
29	48116	PLUG, WINDOW	
31	40346B	LABEL, FUSE 4A	
36	50788A	MEMBRANE PANEL	
38	COML	DATA PLATE	REF DWG 66003AH
43	61265B	TRANSFORMER	
44	62617	LINE FILTER SF3	
66	51086	PLATE LINE FILTER	

ASSY CL2			CATALOG NUMBER
ITEM QTY	PART NO.	DESCRIPTION	REMARKS
			426i
1	65605B	BASE MACHINED	
6	42470A	TOP CAP (MACHINED)	
14	40340	FUSE, SLO-BLO 4A	
15	47415	POWER CORD	
25	65711B	TOWER, CONTROL CL2	
28	65604B	COVER	
29	48116	PLUG, WINDOW	
31	40346B	LABEL, FUSE 4A	
36	50788C	MEMBRANE PANEL	
38	COML	DATA PLATE	REF DWG 66001AC
44	62608	LINE FILTER	SAE #GA1A-8
67	50166	LABEL, OVERLAY, 3i	

ASSY CL2 INT			CATALOG NUMBER
ITEM QTY	PART NO.	DESCRIPTION	REMARKS
			427i
1	65605B	BASE MACHINED	
6	42470A	TOP CAP (MACHINED)	
14	42517	LITTLE FUSE 1.25A 3AG SLO-BLO	#3131.25 OR EQUIV
15	44392	POWER CORD	
25	65711B	TOWER, CONTROL CL2	
28	65604B	COVER	
29	48116	PLUG, WINDOW	
31	40346B	LABEL, FUSE 4A	
36	50788C	MEMBRANE PANEL	
38	COML	DATA PLATE	REF DWG 66003AH
43	61265B	TRANSFORMER	
44	62617	LINE FILTER SF3	
66	51086	PLATE LINE FILTER	
67	50166	LABEL OVERLAY, 3i	

ASSY CL2 INT			CATALOG NUMBER
ITEM QTY	PART NO.	DESCRIPTION	REMARKS
			427UK
1	65605A	BASE MACHINED	
6	42470A	TOP CAP (MACHINED)	
12	60076	RESISTOR 30W 1000 OHMS	
14	42517	LITTLE FUSE 1.25A 3AG SLO-BLO	#3131.25 OR EQUIV
15	65694	POWER CORD	
25	65711A	TOWER, CONTROL CL2	
28	65604A	COVER	
29	48116	PLUG, WINDOW	
31	40346B	LABEL, FUSE 4A	
36	50788A	MEMBRANE PANEL	
38	COML	DATA PLATE	REF DWG 66003BS
43	61265B	TRANSFORMER	
44	62617	LINE FILTER SF3	
66	51086	PLATE LINE FILTER	

ASSY CF 120V			CATALOG NUMBER
ITEM QTY	PART NO.	DESCRIPTION	REMARKS
			452
1	65605B	BASE MACHINED	
6	45301	TOP CAP (MACHINED)	
12	60076	RESISTOR 30W 1000 OHMS	
14	40340	FUSE, SLO-BLO 4A	
15	47415	POWER CORD	
24	36"	TUBING 1/2 O.D. X 3/32 WALL	TYGON B-44-4X
25	65711B	TOWER, CONTROL CL2	
28	65604B	COVER	
31	40346B	LABEL, FUSE 4A	
36	50788B	MEMBRANE PANEL	
38	COML	DATA PLATE	REF DWG 66003BN
44	62608	LINE FILTER	SAE #GA1A-8
50	18"	TUBING FLEX VINYL 1" O.D. X 3/4 I.D.	
59	1420	ASSY DRAINING CHAMBER	
60	50796	HOLD DOWN NUT	
61	65719	SEAL BEARING	
62	48381	O-RING 2-221	
63	AR	2086 GREASE SYNTHETIC TEFLON	
65	COML	CLAMP HOSE 11/16-13/16	RICHCO SHC-44
66	51086	PLATE LINE FILTER	

ASSY CF 240V			CATALOG NUMBER
ITEM QTY	PART NO.	DESCRIPTION	REMARKS
			453
1	65605B	BASE MACHINED	
6	45301	TOP CAP (MACHINED)	
12	60076	RESISTOR 30W 1000 OHMS	
14	42517	LITTLE FUSE 1.25A 3AG SLO-BLO	#3131.25 OR EQUIV
15	44392	POWER CORD	
24	36"	TUBING 1/2 O.D. X 3/32 WALL	TYGON B-44-4X
25	65711B	TOWER, CONTROL CL2	
28	65604B	COVER	
31	40346B	LABEL, FUSE 4A	
36	50788B	MEMBRANE PANEL	
38	COML	DATA PLATE	REF DWG 66003BL
43	18"	61265B TRANSFORMER	
44	1	62617 LINE FILTER SF3	
50	18"	43346 TUBING FLEX VINYL 1" O.D. X 3/4 I.D.	
59	1	1420 ASSY DRAINING CHAMBER	
60	1	50796 HOLD DOWN NUT	
61	1	65719 SEAL BEARING	
62	1	48381 O-RING 2-221	
63	AR	2086 GREASE SYNTHETIC TEFLON	
65	1	COML CLAMP HOSE 11/16-13/16	RICHCO SHC-44
66	1	51086 PLATE LINE FILTER	

MATERIAL:	PARTS LIST. SEE PL:
FINISH:	INTERNATIONAL EQUIPMENT CO.
UNLESS OTHERWISE SPECIFIED: DIMENSIONS ARE IN INCHES. DIMENSIONS ARE AFTER FINISH. REMOVE ALL BURRS & SHARP EDGES. SURFACE QUALITY ✓	TITLE: <b>ASSY. CL2</b>
NEXT ASSY USED ON APPLICATION	SIZE: CODE ID. NO. DRAWING NO. REV.
DRAWN BY PL DATE 4/21/99	D 426A 18
CHECKED	TOLERANCES: 2 PLACE DEC. 3 PLACE DEC. ANGLES ±.02 ±.005 ±1/2
APPROVED	SCALE: SHEET 3 OF 3

4

3

2

1