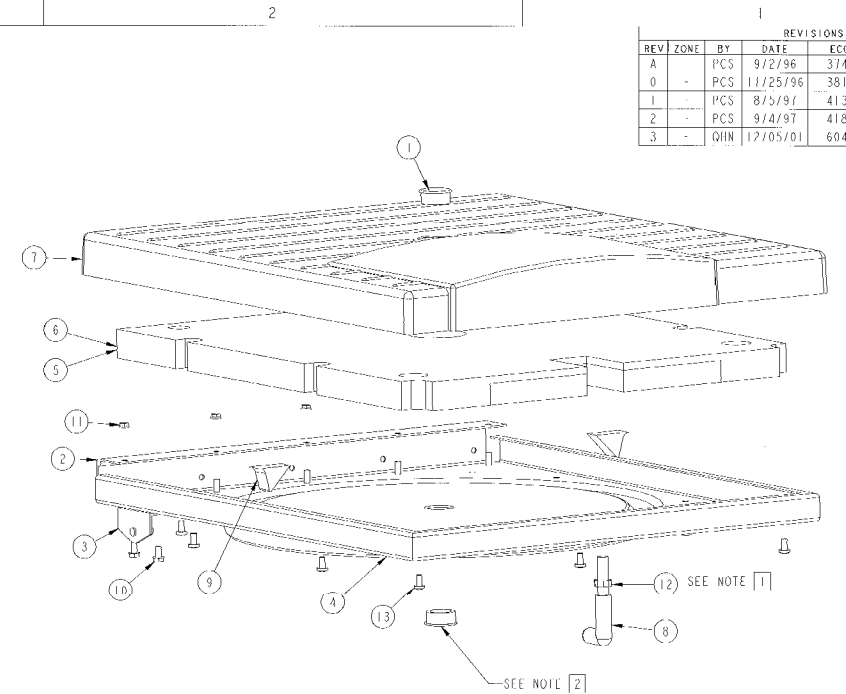
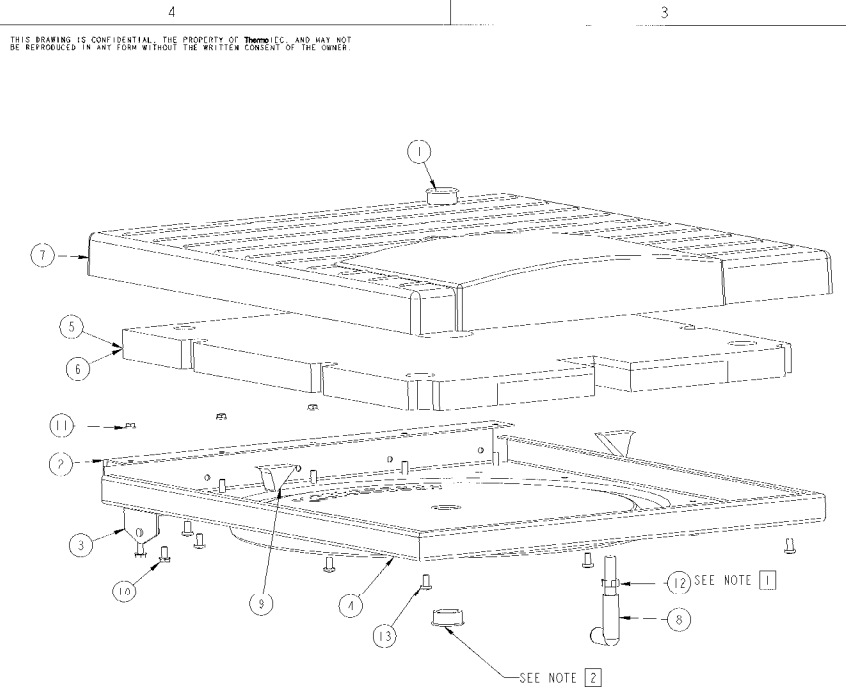


REVISIONS						
REV	ZONE	BY	DATE	ECO	APP'D	DATE
0	-	PCS	9/2/96	3741	PCS	9/18/96
1	-	PCS	11/25/96	3812	PCS	11/25/96
1	-	PCS	8/5/97	4131	PCS	8/5/97
2	-	PCS	9/4/97	4185	PCS	9/4/97
3	-	QJIN	12/05/01	6043	QJ	12/18/01



50931A FOR CL3 REFRIGERATED AND VENTILATED UNITS					
ITEM	QTY	PART NO.	DESCRIPTION	TYPE	REMARKS
1	2	48116	VIEWPORT, HEYCO#1312	PART	FOR VNT UNIT USE ONLY ONE PLUG IN COVER, OMIT PLUG IN LID LINER
2	1	50903	HINGE, CL3/3R	PART	
3	1	50909	BRACKET, UPPER, GAS SPRING, CL3/3R	PART	
4	1	50918A	COVER LINER, CL3	PART	
5	1	50924	AIR BAFFLE, CL3	PART	IN VENTILATED UNITS USE 50924, OMIT 50925
6	1	50925	AIR BAFFLE, CL3R	PART	IN REFRIGERATED UNITS USE 50925, OMIT 50924
7	1	50930A	COVER, CL3(R)	PART	
8	1	51024	LATCH STRIKE, FISHER	PART	
9	2	65302	INSULATION TAPE, VCT-1 1/8 X 2	PART	FILL IN DEPRESSION IN COVER LINER WITH TAPE 2 PLCS, VENT. UNITS ONLY
10	2	H183313	10-32 X .375 WHIZ LOCK, 7N	PART	
11	5	H302301	WHIZ LOCK NUT 10-32, 2N	PART	
12	1	H262024	6/16-24 HEX NUT, SS	PART	
13	9	H555002	STAKE FASTENER, S10F6CPS06BG	PART	

50931B FOR FORMAL REFRIGERATED AND VENTILATED UNITS					
ITEM	QTY	PART NO.	DESCRIPTION	TYPE	REMARKS
1	2	48116	VIEWPORT, HEYCO#1312	PART	FOR VNT UNIT USE ONLY ONE PLUG IN COVER, OMIT PLUG IN LID LINER
2	1	50903	HINGE, CL3/3R	PART	
3	1	50909	BRACKET, UPPER, GAS SPRING, CL3/3R	PART	
4	1	50918B	COVER LINER, CL3R	PART	
5	1	50924	AIR BAFFLE, CL3	PART	IN VENTILATED UNITS USE 50924, OMIT 50925
6	1	50925	AIR BAFFLE, CL3R	PART	IN REFRIGERATED UNITS USE 50925, OMIT 50924
7	1	50930B	COVER, CL3(R)	PART	
8	1	51024	LATCH STRIKE, FISHER	PART	
9	2	65302	INSULATION TAPE, VCT-1 1/8 X 2	PART	FILL IN DEPRESSION IN COVER LINER WITH TAPE 2 PLCS, VENT. UNITS ONLY
10	2	H183313	10-32 X .375 WHIZ LOCK, 2N	PART	
11	5	H302301	WHIZ LOCK NUT 10-32, 2N	PART	
12	1	H262024	6/16-24 HEX NUT, SS	PART	
13	9	H555002	STAKE FASTENER, S10F6CPS06BG	PART	

PROJ MODFI: 50931 ASM

ORIGINAL DOCUMENT

MATERIAL: N.A.		PARTS LIST, SEE PL:	
FINISH: N.A.		ThermoIEC	
TITLE: COVER ASSY, CL3		REV: 3	
STLZ	CODE ID. NO.	DRAWING NO.	50931
D		PRO-E	SHEET 1 OF 1
SCALE: 1/2			

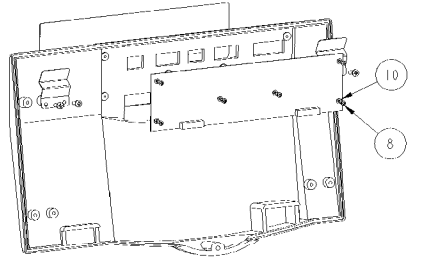
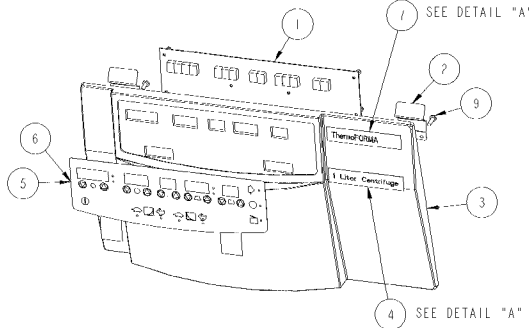
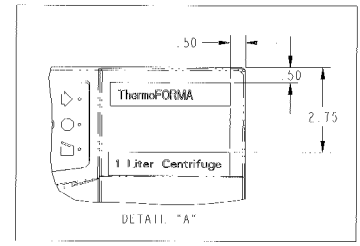
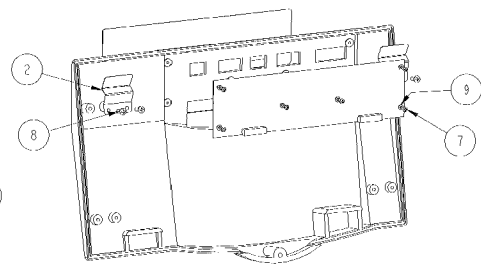
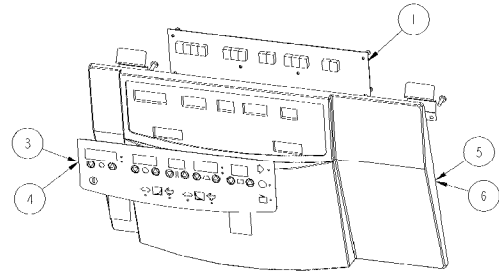
BY	DATE
DRAWN	PCS 9/2/96
CHECKED	PCS 9/18/96
APPROVED	PCS 9/18/96

TOLERANCES	PLACES DEC	PLACES DEC	ANGLES
±.02	±.005	±1/2	

NOTES:
 1 USE LOCTITE 242 ON NUT AFTER ADJUSTMENT
 2 DO NOT ASSEMBLE THIS VIEWPORT IN VENTILATED MODELS

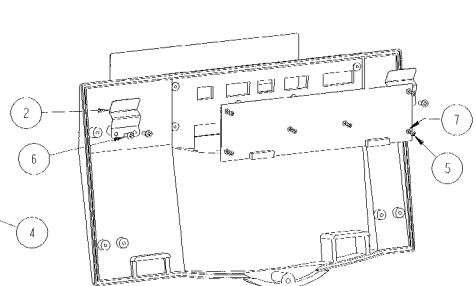
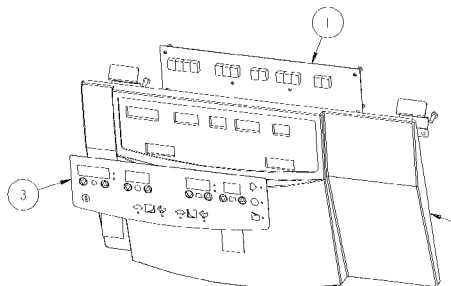
THIS DRAWING IS CONFIDENTIAL, THE PROPERTY OF ThermoIEC, AND MAY NOT BE REPRODUCED IN ANY FORM WITHOUT THE WRITTEN CONSENT OF THE OWNER.

REVISIONS						
REV	ZONE	BY	DATE	ECO	APP'D	DATE
0	-	PCS	11/25/96	3812	PCS	11/25/96
1	-	PL	4/4/01	5783	CI	5/31/01
2	-	PL	8/13/01	5914	RAD	8/21/01
3	-	QUIN	12/05/01	6043	CI	12/10/01
4	-	PL	2/25/02	6083	RAD	2/25/02
5	-	PL	5/10/02	6117	CI	5/16/02
6	-	OHN	07/18/02	6240		<i>R.D.</i> 7/24/02



50933A FOR CL3 REFRIGERATED & VENTILATED UNITS					
ITEM	QTY	PART NO.	DESCRIPTION	TYPE	REMARKS
1	1	44477	DISPLAY/LOGIC PCB, CL3	PART	44477A FOR VENT. UNITS, 44477B FOR REFR. UNITS
2	2	50687	UPPER BEZEL BRACKET	PART	
3	1	50916A	MEMBRANE, CL3	PART	FOR VENT. UNITS
4	1	50916B	MEMBRANE, CL3R	PART	FOR REFR. UNITS
5	1	50932A	BEZEL, CL3	PART	FOR VENT. UNITS
6	1	50932B	BEZEL, CL3R	PART	FOR REFR. UNITS
7	6	H110133	4 40 X .250 PAN HEAD PHIL. SS	PART	
8	4	H170000	#8 X 1/2 PLASTITE PAN HEAD	PART	
9	6	H424011	#4 INTERNAL LOCK WASHER, SS	PART	

50933C FOR FORMA CL3 REFRIGERATED & VENTILATED UNITS					
ITEM	QTY	PART NO.	DESCRIPTION	TYPE	REMARKS
1	1	44477	DISPLAY/LOGIC PCB, CL3	PART	44477A FOR VENT. UNITS, 44477B FOR REFR. UNITS
2	2	50687	UPPER BEZEL BRACKET	PART	
3	1	50932	BEZEL, CL3(R)	PART	
4	1	56619	LABEL FORMA 1 LITER	PART	
5	1	50916C	MEMBRANE, FORMA	PART	FOR VENT. UNITS
6	1	50916D	MEMBRANE, FORMA RLTRIG	PART	FOR REFR. UNITS
7	1	COML	LABEL THERMOFORMA	PART	
8	6	H110133	4 40 X .250 PAN HEAD PHIL. SS	PART	
9	4	H170000	#8 X 1/2 PLASTITE PAN HEAD	PART	
10	6	H424011	#4 INTERNAL LOCK WASHER, SS	PART	



50933D FOR CL3 BIO-RAD VENTILATED UNITS					
ITEM	QTY	PART NO.	DESCRIPTION	TYPE	REMARKS
1	1	44557	DISPLAY/LOGIC PCB, CL3 BIO-RAD	PART	
2	2	50687	UPPER BEZEL BRACKET	PART	
3	1	50916A	MEMBRANE, CL3	PART	
4	1	50932A	BEZEL, CL3	PART	
5	6	H110133	4-40 X .250 PAN HEAD PHIL. SS	PART	
6	4	H170000	#8 X 1/2 PLASTITE PAN HEAD	PART	
7	6	H424011	#4 INTERNAL LOCK WASHER, SS	PART	

ORIGINAL DRAWING

PROENGINEER MODEL 50933.ASM

MATERIAL: N.A.		PARTS LIST: SEE PL:	
FINISH: N.A.		ThermoIEC	
TITLE: BEZEL ASSY (CL3(R))		SIZE: CODE ID. NO. DRAWING NO. REV.	
D		50933 6	
SCALE: 1/2		PRO-E SHEET 1 OF 1	

3531+5533	FORMA 1L	UNLESS OTHERWISE SPECIFIED: DIMENSIONS ARE IN INCHES. DIMENSIONS ARE AFTER FINISH. REMOVE ALL BURRS & SHARP EDGES.
3750D & 3751B	CL3 BIO-RAD	
3750, 51, 55-57	CL3 (R)	
ASSY. NO.	USED ON	
APPLICATION		
DRAWN	BY	DATE
CHECKED	CI	05/01/01
APPROVED	CI	05/01/01
TOLERANCES		2 PLACE DEC. 3 PLACE DEC. ANGLES
±.02		±.005 ±1/2

4

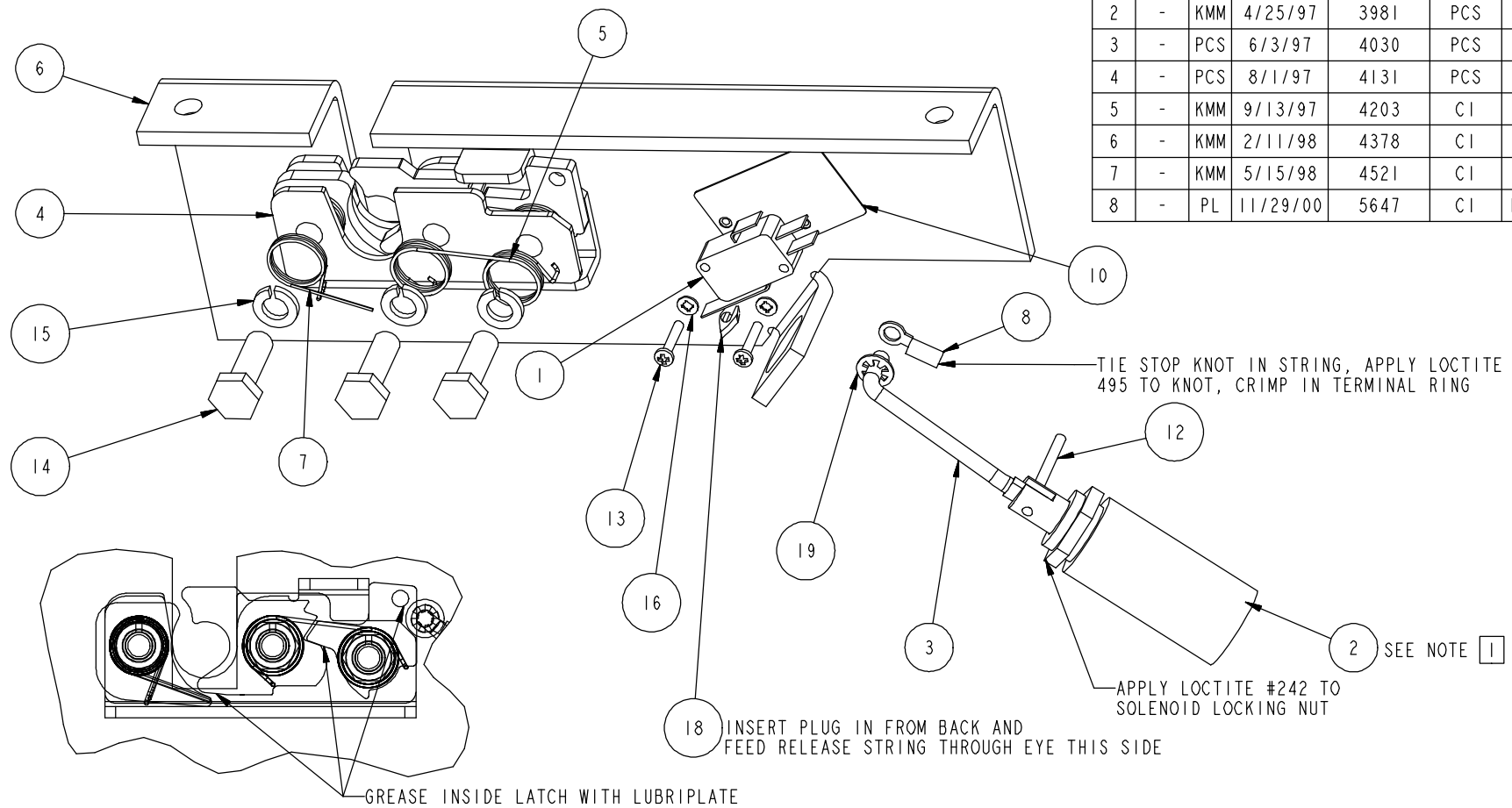
3

2

1

THIS DRAWING IS CONFIDENTIAL, THE PROPERTY OF I.E.C., AND MAY NOT BE REPRODUCED IN ANY FORM WITHOUT THE WRITTEN CONSENT OF THE OWNER.

REVISIONS						
REV	ZONE	BY	DATE	ECO	APP'D	DATE
2	-	KMM	4/25/97	3981	PCS	4/25/97
3	-	PCS	6/3/97	4030	PCS	6/3/97
4	-	PCS	8/1/97	4131	PCS	8/1/97
5	-	KMM	9/13/97	4203	CI	9/16/97
6	-	KMM	2/11/98	4378	CI	2/13/98
7	-	KMM	5/15/98	4521	CI	6/1/98
8	-	PL	11/29/00	5647	CI	12/11/00



ITEM	QTY	PART NO.	DESCRIPTION	TYPE	REMARKS
1	1	43754	MICROSWITCH	PART	
2	1	50634	SOLENOID	ASSEMBLY	SEE NOTE 1
3	1	50635	LINK ARM	PART	
4	1	50912	LATCH	ASSEMBLY	
5	1	50913	SPRING, LATCH	PART	DISCARD STOCK SPRING, REPLACE WITH 50913
6	1	50926	LATCH BRACKET	PART	
7	1	51022	SINGLE TORSION SPRING, FISHER	PART	DISCARD STOCK SPRING, REPLACE WITH 51022
8	1	COML	#10 TERMINAL RING, AMP PN 34149	PART	
9	1	COML	ADHESIVE LOCTITE 242	BULK ITEM	
10	1	COML	INSULATOR PAD, #15PA177-V7	PART	
11	1	COML	LUBRIPLATE 630 AA	BULK ITEM	
12	1	COML	ROLL PIN, 1/8 DIA, 1 LG SST	PART	
13	2	H110105	4-40 X .625 PAN HEAD PHIL, SS	PART	
14	3	H133320	5/16-18 X 1.000 HEX HEAD, SS	PART	
15	3	H419102	5/16 LOCK WASHER SPLIT, SS	PART	
16	2	H424011	#4 INTERNAL LOCK WASHER, SS	PART	
17	1	H509002	POLYESTER 50LB TEST FISHING LINE	BULK ITEM	26" LENGTH, DOUBLE UP
18	1	H703003	HEYCO CLIP, #0311	PART	LEAD RELEASE STRING THROUGH PLUG
19	1	H850015	#8 TINNERMAN	PART	

NOTE(S):
 1 50929A TO USE 50634C; 50929B TO USE 50634D

PROENGINEER MODEL 50929.ASM

MATERIAL:		PARTS LIST. SEE PL:	
N.A.		INTERNATIONAL EQUIPMENT CO.	
FINISH:		TITLE:	
N.A.		LATCH ASSEMBLY	
UNLESS OTHERWISE SPECIFIED: DIMENSIONS ARE IN INCHS. DIMENSIONS ARE AFTER FINISH. REMOVE ALL BURRS & SHARP EDGES. SURFACE QUALITY ✓			
ASSY. NO.	USED ON	SIZE:	CODE ID. NO.
APPLICATION		DRAWING NO.	
BY	DATE	50929	
DRAWN	PCS 9/2/96	REV.	8
CHECKED	HJR 12/1/00	SCALE: 1/1	
APPROVED	PCS 1/31/97	PRO-E SHEET 1 OF 1	
TOLERANCES	2 PLACE DEC.	3 PLACE DEC.	ANGLES
±.02	±.005	±1/2	

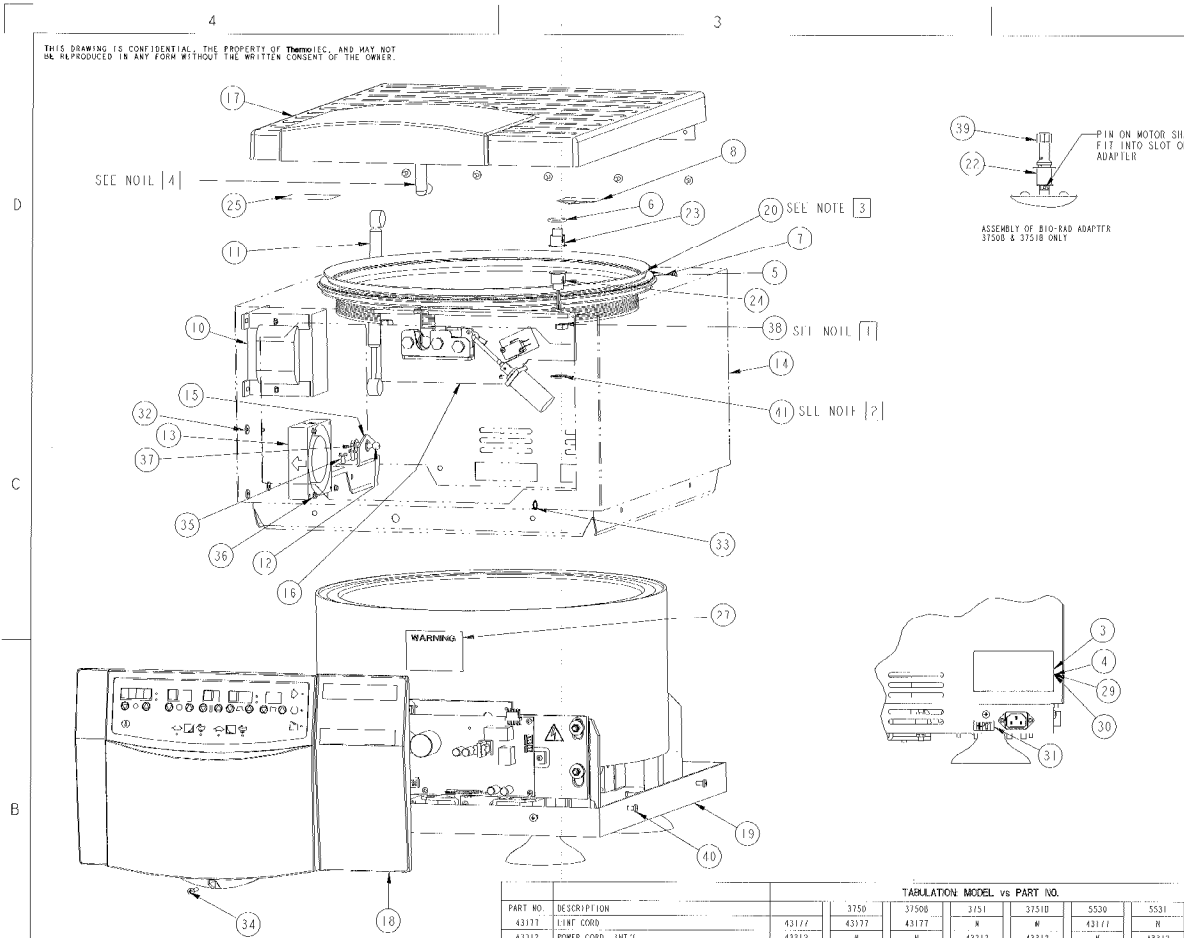
4

3

2

1

THIS DRAWING IS CONFIDENTIAL, THE PROPERTY OF ThermoIEC, AND MAY NOT BE REPRODUCED IN ANY FORM WITHOUT THE WRITTEN CONSENT OF THE OWNER.



- NOTES:
- 1] APPLY LOCTITE 242 TO STUDS FOR LATCH ASSY & TIGHTEN NUTS TO 35 IN-LBS.
 - 2] RETAINING CLIP TO BE INSTALLED INSIDE OF CABINET TO HOLD PROXIMITY SWITCH SECURELY
 - 3] APPLY A 1/4" CONTINUOUS BEAD OF RTV 3145 OR 5818 AROUND INSIDE OF GUARD BOWL, APPROX. 1/2" FROM TOP TO SECURE & SEAL GASKET FLAP. POSITION GASKET SEAM TOWARDS REAR.
 - 4] APPLY LOCTITE 242 TO STRIKE THREADS AFTER ADJUSTED TO PROPER HEIGHT OF CLOSURE.

PART NO.	DESCRIPTION	TABULATION MODEL vs PART NO.					
		3750	3750B	3751	3751B	5530	5531
43177	LINT CORD	43177	43177	N	N	43177	N
43312	POWER CORD, INT'L	43312	43312	N	43312	43312	43312
44102	DATA PLATE FORMA	44102	N	N	N	N	44102B
44105	DATA PLATE FORMA	44105	N	N	N	44105B	N
45274	LABEL, ROTATION	45274	45274	N	45274	N	45274
48704	LABEL, ROTATION (LOCK)	48704	48704	N	48704	N	48704
50220	UID-RAD ROTOR	50220	50220	N	50220	N	N
50931	COVER ASSY, CL318	50931	50931A	50931A	50931A	50931A	50931B
50933	BEZEL ASSY CL318	50933	50933B	50933B	50933A	50933B	50933C
50978	DC ADAPTER ASSY - CL3	50978	N	50978	N	50978	N
65709	O'ASSY WRENCH	65709	N	65709	N	65709	N
66001	CSA DATA PLATE LABEL	66001	66001AT	N	N	N	N
66003	DATA PLATE LABEL	66003	N	66003OT	66003BS	N	N
508308	TRANSFORMER	508308	N	508308	508308	N	508308
833002	1/2" HEX JAM NUT, SS	833002	N	N	N	N	N
15-3750B	INSTRUCTION SHEET, A PRIMER ON RPM VS. REF	15-3750B	N	15-3750B	N	15-3750B	N
OP-MANUAL	OPERATORS MANUAL	OP-MANUAL	OM3750	OM3750	OM3750	OM5530	OM5530

ITEM	QTY	PART NO.	DESCRIPTION	TYPE	REMARKS
1	1	43177	***SEE TABLE ***LINT CORD	PART	NOT SHOWN
3	1	43312	***SEE TABLE ***POWER CORD, INT'L	PART	NOT SHOWN
7	1	44102	***SEE TABLE ***DATA PLATE FORMA	PART	NOT SHOWN
4	1	44105	***SEE TABLE ***DATA PLATE FORMA	PART	NOT SHOWN
5	1	45274	***SEE TABLE ***LABEL, ROTATION	PART	3750, 3751, 5530, AND 5531 ONLY
6	1	48580	.75 D RING, 103 DIA.	PART	
7	1	48704	***SEE TABLE ***LABEL, ROTATION (LOCK)	PART	3750B & 3751B ONLY
8	1	50811	LATCH, CARTON	PART	PLACE ON THE UNDERSIDE OF COVER
9	1	50220	***SEE TABLE ***UID-RAD ROTOR	PART	NOT SHOWN, 3750B & 3751B ONLY
10	1	50830B	***SEE TABLE ***FRONT COVER	PART	8X32 WHIT NUT, 3751(B) AND 5531 ONLY
11	1	50978	GAS SPRING W/HD 4 ITEMS, CL318	PART	INSTALL WITH STRIKER ROD DOWN INSIDE UNIT
12	1	50908	BALL STUD, GAS SPRING, CL318	PART	5/16-18 NUT
13	1	50915	FAN, PCH COOLING	PART	HILOU QTY: 8-32 WHIT NUT, 437 OD X 16 ID X .060 THK WSH
14	1	50920	CABINET, CL3	PART	51066/CL007
15	1	50927	BRACKET, LOWER, GAS SPRING	PART	10-32X 3/16 WHIT LOCK
16	1	50929A	LATCH, ASS'Y ONLY	ASSEMBLY	5/16-18 JAM NUT
17	1	50931	***SEE TABLE ***COVER ASSY, CL318	ASSEMBLY	10-32X 3/16 WHIT LOCK
18	1	50933	***SEE TABLE ***BEZEL ASSY CL318	ASSEMBLY	8-32X 3/16 WHIT LOCK
19	1	50948	BASE ASSY CL3	ASSEMBLY	
20	1	50941	CL3 EXTRUDED GASKET	PART	
21	1	50976	LOGIC/DISPLAY HARNESS, CL318	PART	NOT SHOWN
22	1	50978	***SEE TABLE ***DC ADAPTER ASSY - CL3	ASSEMBLY	3750 & 3751B ONLY
23	1	51064-1	PROXIMITY SENSOR ASSY, MAGNETIC	PART	
24	1	51064-2	PROXIMITY SENSOR ASSY, SWITCH	PART	
25	1	51067	LABEL, ROTOR INSTALLATION	PART	
26	1	51236	COVER SWITCH HARNESS	PART	NOT SHOWN
27	1	62508	LABEL, WARNINGS	PART	ATTACH TO CONTAINMENT RINGS ABOVE CIRCUIT BOARD
28	1	65709	***SEE TABLE ***O'ASSY WRENCH	PART	NOT SHOWN, 3750B & 3751B ONLY
29	1	66001	***SEE TABLE ***CSA DATA PLATE LABEL	PART	
30	1	66003	***SEE TABLE ***DATA PLATE LABEL	PART	
31	1	COM1	HI-POT SAFETY ILSI LABEL	PART	
32	3	COM1	4370D X 15610 X .002THK NITROPHILIC WASHER	PART	
33	1	COM1	ARROW CLIP, HVECO 8381	PART	TIE RELEASE STRING TO EYE
34	1	8110117	8-32 X .875PAN HEAD PHIL. SS	PART	
35	7	8183313	10-32 X .375 WHIT LOCK, ZN	PART	
36	7	8302307	WHIT LOCK NUT 8-32, ZN	PART	USE ONLY 4 ON 3750(B)
37	1	8302702	WHIT LOCK NUT 5/16-18, ZN	PART	
38	7	8338101	5/16 18 HEX JAM NUT, SS	PART	
39	1	833002	***SEE TABLE ***1/2" HEX JAM NUT, SS	PART	
40	8	8555008	STAR FASTENER, 51066/CL007	PART	
41	1	8550000	.75 DIAMETER INTERNAL LOCKING RETAINING CLIP	PART	
42	1	15-3750B	***SEE TABLE ***INSTRUCTION SHEET, A PRIMER ON RPM VS. REF	PART	NOT SHOWN
43	1	OP-MANUAL	***SEE TABLE ***OPERATORS MANUAL	PART	NOT SHOWN
44	2	P0120	CORNER BLOCK, WOOD	PART	NOT SHOWN
45	1	P0110B	CARTON	PART	NOT SHOWN
46	1	P0111	SKID PALLET	PART	NOT SHOWN
47	8	P0101	PLASTIC PROTECTIVE CORNER	PART	NOT SHOWN

PROFENGINEER MODEL NO.: 3750-55.ASM

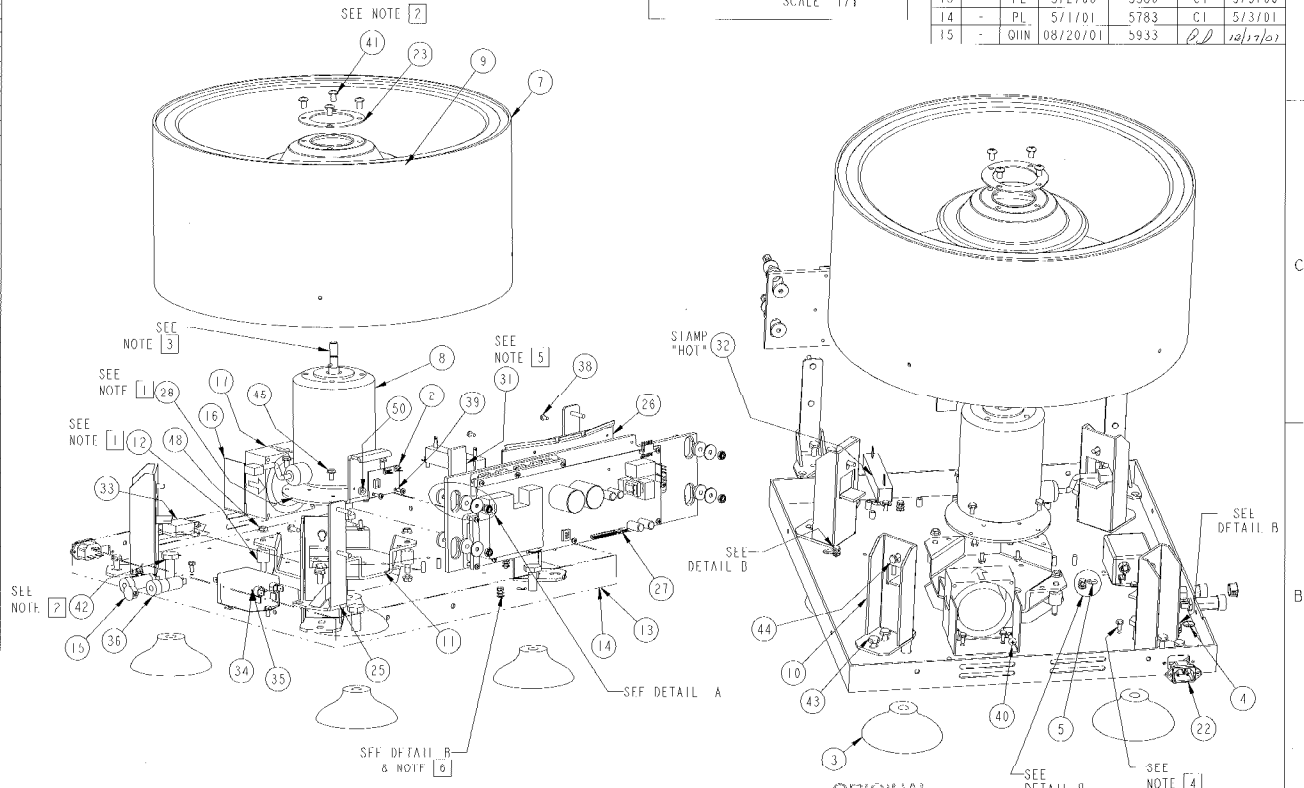
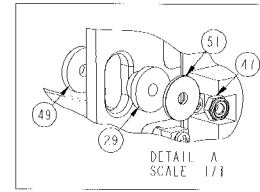
ORIGINAL DOCUMENT

MATERIAL:		PARTS LIST, SEE PL:	
N.A.		ThermoIEC	
FINISH:		TITLE:	
N.A.		CENTRA CL3-MAIN ASSY	
UNLESS OTHERWISE SPECIFIED: DIMENSIONS ARE IN INCHES. DIMENSIONS ARE AFTER FINISH. REMOVE ALL BURRS & SHARP EDGES. SURFACE QUALITY: ✓			
ASSY NO.	USED ON	SIZE: CODE ID. NO.	DRAWING NO.
	APPLICATION	D	3750
BY	DATE	REV.	15
DRAWN PCS	9/17/96	TOLERANCES	
CHECKED CI	03/06/02	PLACEMENT	
APPROVED CI	03/06/02	PLACEMENT	
SCALE: 1/3		PRO-E SHEET 1 OF 1	

THIS DRAWING IS CONFIDENTIAL, THE PROPERTY OF ThermoIEC, AND MAY NOT BE REPRODUCED IN ANY FORM WITHOUT THE WRITTEN CONSENT OF THE OWNER.

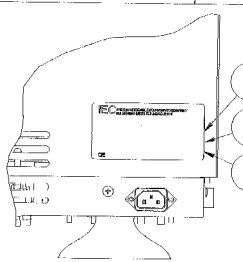
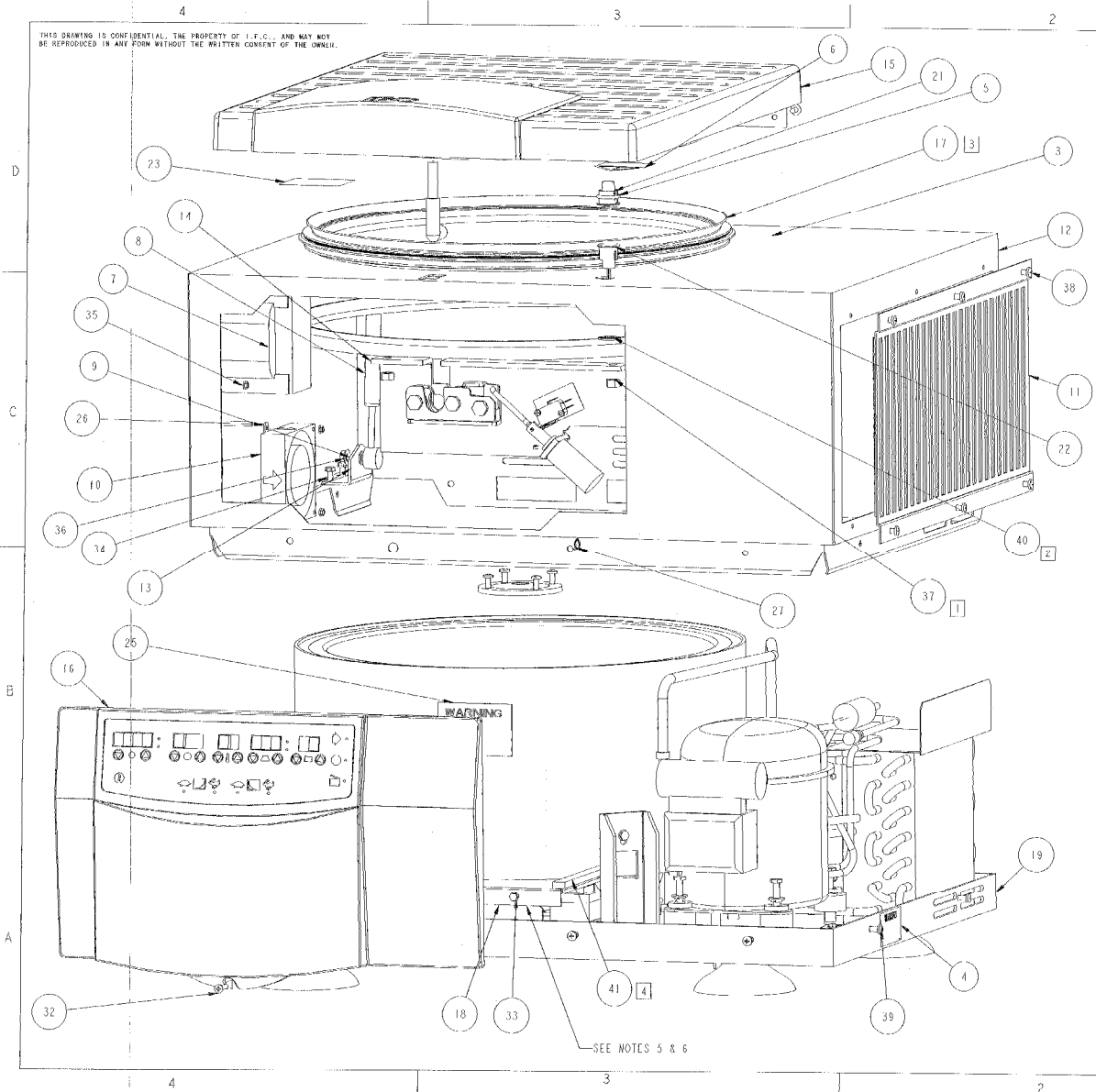
ITEM	QTY	PART NO.	DESCRIPTION	TYPE	REMARKS
1	1	10081	SCHEMATIC DIAGRAM	PART	NOT SHOWN
2	1	44495C	IMBALANCE DETECTION PCB, C13 & 3200VAC	PART	6-32X.375 FN HD PL, SS, 38 ODV, 16 IDV, 13 TH, NYLON WDR
3	4	47448	SILICON COP FOOT	PART	7/16-14 UNC 3 1.80 & 1.0621TF 582
4	1	50127	LABEL PROTECTIVE EARTH GROUND SYMBOL	PART	
5	3	50128	LABEL SECONDARY CHASSIS GROUND SYMBOL	PART	
6	1	50805C	GROUND WIRE	PART	NOT SHOWN
7	1	50662	GUARD BOWL ASSY, 15 IN. VENT.	ASSEMBLY	
8	1	50900	MOTOR, BRUSH FSS DC	PART	8-32X.375 WHIZ LOCK
9	1	50902A	MOJOR HOOD	PART	
10	2	50904	SUPPORT LEGS, CL3/3R	PART	1/4-20X.500 WHIZ LOCK; 10-32X.500 WHIZ LOCK
11	1	50905	SUPPORT PLATE, MOTOR, CL3/3R	PART	1/4-20 WHIZ NOT
12	4	50911	ISOLATOR	PART	1/4-20 WHIZ NOT
13	1	50927A	BASE, CL3	PART	3/50810 & 3/51810 ONLY
14	1	50928B	BASE, FOSMA CL3	PART	5031 ONLY
15	1	50928	HOIF PLUG	PART	3/50810 ONLY
16	1	50937	BRACKET, FAN	PART	8-32X.375 WHIZ LOCK
17	1	50933	FAN, MOTOR	PART	#10 SFF TAP, FAN BLOWS IN
18	1	50950A	MAIN HARNESS CL3	PART	NOT SHOWN
19	1	50951	POWER HARNESS CL3 (R)	PART	NOT SHOWN
20	1	50952	URRAL RESISTOR HARNESS	PART	NOT SHOWN
21	1	50955	TRANSFORMER HARNESS	PART	NOT SHOWN, 375181 & 5531 ONLY
22	1	51063	POWER ENTRY MODULE	PART	BIVET IN PLACE
23	1	51071	MOTOR BOOT SEAL RING	PART	1/4-20X.375 ROUND HD PHIL, SS
24	1	51322	IMBALANCE PCB HARNESS, IEC MP (R)	PART	NOT SHOWN
25	2	51389	BRACKET, PCB	ASSEMBLY	1/4-20 WHIZ LOCK, ZN
26	1	51402	SHIELD, PCB	PART	8-32X.312 PAN HD PHIL, SS
27	1	51403	ELECTRONIC BOARD ASSY'S	ASSEMBLY	SEE DETAIL A
28	1	51404	ADAPTER PLATE, MOTOR	PART	10-32X.375 WHIZ LOCK, ZN
29	4	51410	SHOULDER WASHER	PART	
30	1	51421A	GROUND WIRE HARNESS	PART	NOT SHOWN
31	1	51427	NYLON SHIM, PCB	PART	
32	1	80430A	MOTOR BRUSH RESISTOR	PART	8-32X.315 WHIZ LOCK
33	1	80615	CAPACITOR ASSY, HIGH VOLT	PART	8-32 X.375 WHIZ LOCK; 375181 & 5531 ONLY
34	1	82607	LINE FILTER - 20 AMPS	PART	8-32 X.375 WHIZ LOCK; 375181 ONLY
35	1	82612	FILTER	PART	8-32X.375 WHIZ LOCK; 375181 ONLY
36	2	82713N	FILTRAIL HUBKAP - 15 AMP	PART	1.00 82701R; 2.00 82701S & 82701T
37	1	COM	ALL PURPOSE SPRAY LUBRICANT	DURK. FILM	F.O. STARKETT CO, NOT SHOWN SEE NOTE 3
38	2	H11011A	6-32 X. 312 PAN HEAD PHIL, SS	PART	
39	2	H110127	6-32 X. 315 PAN HEAD PHIL, SS	PART	
40	2	H120690	10-32X 1/2 SELF TAPPING B	PART	
41	4	H124100	1/4-20 X. 375 ROUND HD PHIL, SS	PART	
42	4	H13327A	1/16-14 X 1.000 HD HEAD, SS	PART	
43	8	H183305	1/4-20 X. 500 WHIZ LOCK, ZN	PART	
44	4	H183307	10-32 X. 500 WHIZ LOCK, ZN	PART	
45	4	H183313	10-32 X. 375 WHIZ LOCK, ZN	PART	
46	15	H183318	8-32 X. 375 WHIZ LOCK, ZN	PART	
47	4	H300100	10-32 HEX LOCK NUT, SS W/FLDR INSERT	PART	
48	8	H302701	WHIZ LOCK NUT 1/4-20, ZN	PART	
49	4	H401804	.750 OD X .710 ID X .125 TH, NYLON WASHER	PART	
50	2	H401814	.375 OD X .156 ID X .125 TH, NYLON WASHER	PART	
51	4	H409107	#10 FLAT WASHER, .250 OD X .203 ID X .063 TH	PART	
52	4	H424103	#8 INTERNAL LOCK WASHER, SS	PART	
53	4	H425101	#8 EXTERNAL LOCK WASHER, SS	PART	

- 1 USE LOCTITE 242 ON NUTS ATTACHING ISOIATORS TO BASE PLATE AND SUPPORT PLATE, 8 PLCS & 10 SCREWS ATTACHING MOTOR ADAPTER PLATE TO MOTOR, 4 PLCS.
- 2 APPLY LOCTITE 502 TO SCREWS USED TO FASTEN MOTOR BOOT AND SEAL RING TO MOTOR AND TO HLX HD SCREWS WHEN ATTACHING SUCTION FEET-4 PL3.
- 3 SPRAY LUBRICANT ON SHAFT AND WIPE OFF EXCESS
- 4 USE THIS WHIZ-LOCK SCREW TO SECURE 00615(CAP ASSY) TO BASE.
- 5 PLACE NYLON SHIM AT CENTER OF PCB BOARD ASSEMBLY FACING THE GUARDBOWL.
- 6 GROUND LOCATION FOR 51421A WIRE HARNESS.
- 7 GROUND PER Thermo IEC SPEC 355/3, 4-PL3.



REVISIONS						
REV	ZONE	BY	DATE	ECO	APP'D	DATE
5		KMM	2/11/98	4378	CI	2/13/98
6		CI	4/20/98	4476	CI	4/23/98
7		PL	7/7/98	4597	CI	7/10/98
8		PL	11/19/98	4811	CI	11/28/98
9		KMM	1/5/99	4828	CI	1/13/99
10		PI	4/9/99	4985	CI	4/23/99
11		PL	8/9/99	5100	CI	9/27/99
12		PL	11/3/99	5188	CI	12/15/99
13		PL	5/2/00	5386	CI	5/3/00
14		PL	5/1/01	5783	CI	5/3/01
15		QIIN	08/20/01	5933	CI	10/12/01

MATERIAL:		PARTS LIST. SEE PL:	
N.A.		ThermoIEC	
FINISH:		TITLE:	
N.A.		BASE ASSY CL3	
UNLESS OTHERWISE SPECIFIED: DIMENSIONS ARE IN INCHES. DIMENSIONS ARE AFTER FINISH. REMOVE ALL BURRS & SHARP EDGES. SURFACE QUALITY: ✓			
APPLICATION		SIZE: CODE ID. NO.	DRAWING NO.
BY DATE		50940	50940
DRAWN PCS 9/8/96	CHECKED CI 05/03/01	APPROVED CI 05/03/01	REV. 15
TOLERANCES		SCALE: 1/3	PRO F SHEET 1 OF 1
PLACE DEC 1.00	PLACE DEC 1.005	ANGLES 1/2	



REVISIONS						
REV	ZONE	BY	DATE	ECO	APP'D	DATE
9	-	PI	4/30/99	4991	CI	4/30/99
10	-	PL	1/20/99	5023	CI	1/23/99
11	-	PL	8/9/99	5100	CI	9/22/99
12	-	PL	11/11/99	5198	CI	11/16/99
13	-	PL	12/28/99	5203	CI	1/5/00

- NOTES:
- APPLY LOC111F 742 TO STUDS FOR LATCH ASSY & TIGHTEN NUTS TO 15 IN-FTS.
 - RETAINING CLIP TO BE INSTALLED INSIDE OF CABINET TO HOLD PROXIMITY SWITCH SECURELY.
 - APPLY X 1/4" CONTINUOUS DEAD-EN NUT 3145 OR 5016 AROUND INSIDE OF GUARD RING, APPROX. 1/2" FROM TOP TO SECURE GASKET LATCH. POSITION GASKET SEAL TOWARDS REAR.
 - ADD 2 STRIPS OF TAPE (ITEM 41) ALONG TOP OF SHIELD (ITEM 18) AT BOTH SIDE EDGES.
 - APPLY 5MM1 READ-OF RTV 3145 TO SHIELD AT "V" TO SEAL SPLIT EDGE
 - FOLD STRIPS OF ALUMINUM TAPE AROUND FRONT & SIDR DRIP EDGES TO PROTECT WIRE HARNESSES.

ITEM	QTY	PART NO.	DESCRIPTION	TYPE	REMARKS
1	1	42977	LIME COOR	PART	NOT SHOWN; 3155 ONLY
2	1	42312	POWER COORD. INT'L	PART	NOT SHOWN; 3155 & 3157 ONLY
3	1	42314	JARTEL ISOLATION	PART	
4	1	45886	LABEL, WARNING	PART	
5	1	48880	.75 O-RING, .103 DIA.	PART	
6	1	50011	LABEL, CABTION	PART	PLACE ON THE UNDERSIDE OF COVER
7	1	50030	TRANSFORMER	PART	3156 & 3157 ONLY; 0-32 WHIZ NUT
8	1	50097	GAS SPRING W/END FITTINGS, CL3/2K	PART	INSTALL WITH OTHER ROD DOWN INSIDE UNIT
9	1	50090	WALL STOP, GAS SPRING, CL3/2K	PART	5/16-18 WHIZ NUT
10	1	50015	FAN, PCB COOLING	PART	INSTALL FAN BLOWING IN TO UNIT, 0-32 WHIZ NUT
11	1	50019A	ACCESS PANEL, CLR3	PART	
12	1	50021	CABINET, CL3R	PART	
13	1	50022	BRACKET, LOWER, GAS SPRING	PART	0-32X3/8 WHIZ LOCK
14	1	50098A	LATCH ASSEMBLY	ASSEMBLY	5/16-18 JAN NUT
15	1	50097	COVER ASSY, LEVHS	ASSEMBLY	0-32X3/8 WHIZ LOCK
16	1	50035	BECEL ASSY, CL3/2K	ASSEMBLY	
17	1	50041	CL3 LEVHDDO GASKET	PART	
18	1	50042	PCB SHIELD	PART	0-32 x .250 WHIZ LOCK
19	1	50046	WIRE, ACRYL SLDR	ASSEMBLY	
20	1	50050	LOC11C/3/2K/4K HARNESS, CL3/2K	PART	NOT SHOWN
21	1	51044-1	PROXIMITY SENSOR ASSY, M8000	PART	
22	1	51044-2	PROXIMITY SENSOR ASSY, SWITCH	PART	
23	1	51082	LABEL, ROTOR INSTALLATION	PART	
24	1	51226	COVER SWITCH HARNESS	PART	NOT SHOWN
25	1	50550	LABEL, WARNING	PART	ATTACH TO CONTAINMENT RING ABOUT POOR BOARD
26	3	COM1	.83700 X .15610 X .06210 RELEASE WASHER	PART	
27	1	COM1	RELEASE CLIP, HELCO 0301	PART	TIE RELEASE STRING TO EYE
28	1	COM1	PTMAGNUM	PART	
29	1	COM1/66013R	DATA, LABEL CSA W/FRIGORANT	PART	WHIZ NUT
30	1	COM1/66014E	LABEL, DATA W/REFRIGERANT	PART	3155 ONLY
31	1	COM1/66014E	LABEL, DATA W/REFRIGERANT	PART	3157 ONLY
32	1	HT10117	8-32X7/8 PAN HEAD PHIL, SS	PART	
33	2	H03532	8-32 X .250 WHIZ LOCK, ZN	PART	
34	1	H03232	10-32 X .375 WHIZ LOCK, ZN	PART	
35	7	H03230	WHIZ LOCK NUT 8-32, ZN	PART	
36	1	H03230Z	WHIZ LOCK NUT 5/16-18, ZN	PART	
37	1	H038101	HEX NUT JAN 5/16, SS	PART	
38	6	H055002	STAKE FASTENER, ST080C/0080	PART	
39	10	H055008	STAKE FASTENER, ST080C/0080	PART	
40	1	H055000	.75 DIAMETER INTERNAL LOCKING RETAINING CLIP	PART	7 #10002 (9.00 x 11.00 LG. APPROX)
41	1	H050003	TAPETAP 1/4 INCH X 1/2 WHIZ SINGLE SIDER	PART	
42	1	0M3750	CL3/2K OPERATORS MANUAL	PART	
43	2	19105	CORNER BLOCK, WOOD	PART	NOT SHOWN
44	1	P01100	CARTON	PART	NOT SHOWN
45	1	P0111	SKID, PALLET	PART	NOT SHOWN
46	5	P0101	PLASTIC PROTECTIVE COVER	PART	NOT SHOWN

ORIGINAL DOCUMENT

PROENGINEER MODEL # 3150-55, ASM

MATERIAL:	N.A.	PARTS LIST, SEE PL:
FINISH:	N.A.	INTERNATIONAL EQUIPMENT CO.
TITLE:	CENTRA CLR3-MAIN ASSY	3M 12 2000
SIZE:	CODE ID. NO. 3155	DRAWING NO. 3155
REV.:	13	SHEET 1 OF 1

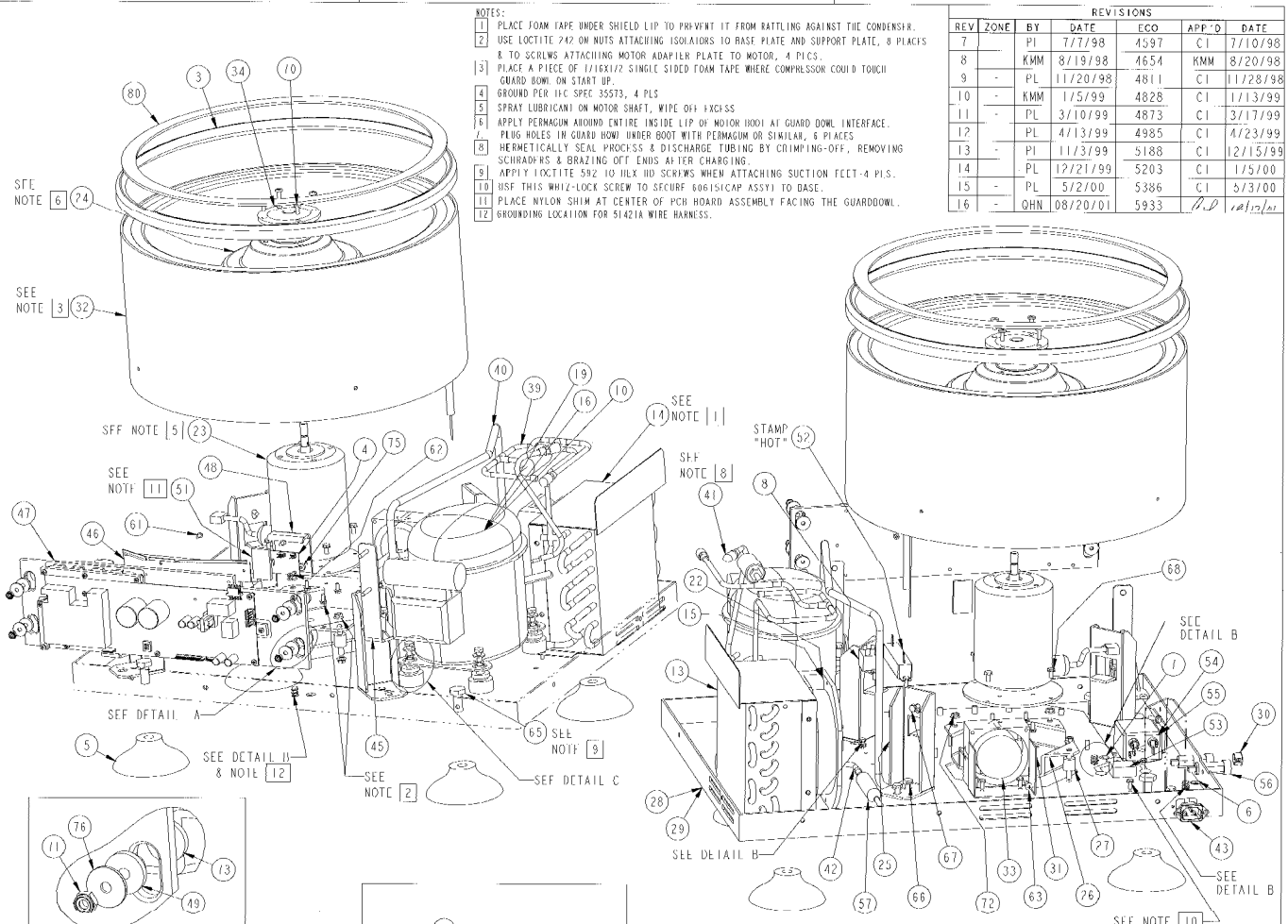
UNLESS OTHERWISE SPECIFIED: DIMENSIONS ARE IN INCHES. DIMENSIONS ARE AFTER FINISH. FILMUP ALL RIBBS & SHARP EDGES. SURFACE QUALITY: TOLERANCES: 1 PLACE DEC. 2 PLACE DEC. 3 1/2

SCALE: 1/1

PRO-E

THIS DRAWING IS CONFIDENTIAL, THE PROPERTY OF ThermoIEC, AND MAY NOT BE REPRODUCED IN ANY FORM WITHOUT THE WRITTEN CONSENT OF THE OWNER.

ITEM	QTY	PART NO.	DESCRIPTION	TYPE	REMARKS
1	1	10002	SCHEMATIC DIAGRAM	PART	NOT SHOWN
2	1	33432	TURNING, SPONGE MUDDER	PART	NOT SHOWN, 1.0 FT ABOVE REFRIG. TURNING
3	1	3642	P-GASKET	PART	4.7 FT.
4	1	44495C	IMBALANCE DETECTION PCB, CL3 & 3200181	PART	6.352 X .375 X HD PL, .553 .28 DRX, 16 154 (15TH, 4TH ON)
5	4	47249	SUCTION COP FOOT	PART	2746-1400K X 1.30 X 1.6 X LOCITITE 550
6	1	50127	LABEL PROTECTIVE EARTH GROUND SYMBOL	PART	NOT SHOWN
7	3	50128	LARFI SECONDARY CHASSIS GROUND SYMBOL	PART	NOT SHOWN
8	1	505970	SOLID STATE RELAY	PART	8-327.375 WHIZ LOCK
9	1	50695C	GROUND WIRE	PART	NOT SHOWN
10	1	50129A	COMPRESSOR	PART	USE ONLY ON 3755
11	4	50124B	COMPRESSOR GROMMET	PART	USE ONLY ON 3755
12	4	50124C	CONDENSEL SLEEVE	PART	USE ONLY ON 3755
13	1	50125	CONDENSER SLEEVE	PART	USE ONLY ON 3755
14	1	50126	CONDENSER SHIELD	PART	8-328.375 WHIZ LOCK
15	1	50127	FAN	PART	810 SELF TAP, 3755 ONLY, REMOVE ONLY
16	1	50698A	COMPRESSOR 230/50	PART	USE ONLY ON 3757
17	4	50620U	COMPRESSOR GROMMET	PART	USE ONLY ON 3757
18	4	50620C	GROMMET SLEEVE	PART	USE ONLY ON 3757
19	1	50640A	COMPRESSOR 230/50	PART	USE ONLY ON 3758 & 5533
20	4	50640B	COMPRESSOR GROMMET	PART	USE ONLY ON 3758 & 5533
21	4	50640C	GROMMET SLEEVE	PART	USE ONLY ON 3758 & 5533
22	1	50642	FAN	PART	810 SELF TAP, 3756, 3757, & 5533 ONLY, REMOVE ONLY
23	1	505910	MOTOR, BRUSHLESS DC	PART	8-324.375 WHIZ LOCK
24	1	505917A	MOTOR HOOD	PART	NOT SHOWN
25	4	505914	SUPPORT LOGS, CL3/3R	PART	1/4-20X.500 WHIZ LOCK; 10-32X.500 WHIZ LOCK
26	4	505905	SUPPORT PLATE, MOTOR, CL3/3R	PART	1/4-20 WHIZ LOCK
27	4	505911	ISOLATOR	PART	1/4-20 WHIZ LOCK
28	1	505924	BASE, CL3/4	PART	3755-21 ONLY
29	1	505926	BASE, FORM A CL3/4	PART	5533 ONLY
30	1	505976	HOLE PLUG	PART	3755 ONLY
31	1	505937	BRACKET, FAN	PART	8-327.375 WHIZ LOCK
32	1	505936	GUARD BOWL ASSY, CL3R	ASSEMBLY	NOT SHOWN
33	1	505939	FAN, MOTOR	PART	810 SELF TAP, FAN BLOWING IN
34	1	505945	MOTOR SHIM SEAL RING	PART	1/4-20X.500 PAN HD SEALING, SST SCREW
35	1	505950U	MAIN HARNESS CL3R	PART	NOT SHOWN
36	1	505951	POWER HARNESS CL3/4	PART	NOT SHOWN
37	1	505952	BRAKET RESISTOR HARNESS	PART	NOT SHOWN
38	1	505954	TRANSFORMER HARNESS	PART	NOT SHOWN, 3756, 3757, & 5533 ONLY
39	1	505960	TURNING, DISCHARGE - CL3	ASSEMBLY	NOT SHOWN
40	1	505961	TUBING, SUCTIION - CL3	PART	NOT SHOWN
41	1	505962	TUBING, PROCESS - CL3	ASSEMBLY	NOT SHOWN
42	1	505964	DRYER TUBE	PART	NOT SHOWN
43	1	51063	POWER ENTRY HOOD/IF	PART	RIVET IN PLACE
44	1	51322	IMBALANCE PCB HARNESS, 1EC MFCER	PART	NOT SHOWN
45	2	51309	URACKET, PCB	ASSEMBLY	1/4-20X.50 WHIZ LOCK, 7M
46	1	51402	SHIELD, PCB	PART	8-32 X .312 PAN HD PHIL, SS
47	1	51403	ELECTRONIC BOARD ASSY'S	ASSEMBLY	SEE DETAIL X
48	1	51484	ADAPTER PLATE, MOTOR	PART	10-32X.215 WHIZ LOCK, 2M
49	4	51419	SHOULDER WASHER	PART	NOT SHOWN
50	1	51421A	GROUND WIRE HARNESS	PART	NOT SHOWN
51	1	51472	RESISTOR SHIM PCB	PART	NOT SHOWN
52	1	40430A	MOTOR BRACKET RESISTOR	PART	8-327.375 WHIZ LOCK
53	1	40615	CAPACITOR ASSY, WIND VOLT	PART	8-32 X .375 WHIZ LOCK, 3758 & 5533 ONLY
54	1	42607	LINE FILTER - 20 AMPS	PART	88-324.375 WHIZ LOCK, 3755 ONLY
55	1	42612	FILTER	PART	88-324.375 WHIZ LOCK, 3758, 3757, & 5533 ONLY
56	2	82717D	CIRCUIT BREAKER - 15 AMP	PART	1 ON 3756, 2 ON 3758, 3757, & 5533
57	1	85310	FILTER DRYER	PART	NOT SHOWN
58	1	85692	TEMPERATURE SENSOR	PART	NOT SHOWN, REF. HEIGHT .35 INTO GUARD BOWL
59	1	COM1	ALL PURPOSE SPRAY LUBRICANT	QUICK ITEM	L.G. STAINLESS ST, NOT SHOWN SEE NOTE [5]
60	1	COM1	AMP R360035-1	QUICK ITEM	NOT SHOWN, PRES. SWITCH ON 50945
61	2	81110174	6-32 X .312 PAN HEAD PHIL, SS	PART	NOT SHOWN
62	2	81110122	6-32 X .375 PAN HEAD PHIL, SS	PART	NOT SHOWN
63	2	8120008	10-32X.122 SST 1/4 RAPPING B	PART	NOT SHOWN
64	4	8133308	1/4-20 X 1.250 HEX HEAD, CAB	PART	NOT SHOWN
65	4	8133324	7/16-14 X 1.000 HEX HEAD, SS	PART	NOT SHOWN
66	0	8183305	1/4-20 X .500 WHIZ LOCK, 7M	PART	NOT SHOWN
67	4	8183307	10-32 X .300 WHIZ LOCK, 2M	PART	NOT SHOWN
68	4	8183313	10-32 X .375 WHIZ LOCK, 7M	PART	NOT SHOWN
69	19	8183318	8-32 X .375 WHIZ LOCK, 7M	PART	NOT SHOWN
70	4	8240001	SCHULM 1/4-20 X .500 PAN HD SEALING, SS	PART	NOT SHOWN
71	4	8300100	10-32 HEX LOCK NUT, SS NIKYTON INSERT	PART	NOT SHOWN
72	8	8302101	WHIZ LOCK NUT 1/4-20, 2M	PART	NOT SHOWN
73	4	8401004	.750 OD X .210 ID X .125 THK, NYLON WASHER	PART	NOT SHOWN
74	4	8401111	1/4" FLAT WASHER, SS	PART	NOT SHOWN
75	2	8401814	.375 OD X .156 ID X .175 THK, NYLON WASHER	PART	NOT SHOWN
76	4	8401819	1/4" FLAT WASHER .750 OD X .203 ID X .063 THK	PART	NOT SHOWN
77	4	8418100	1/4-20 LOCK WASHER SPLIT, SS	PART	NOT SHOWN
78	4	8424103	88 INTERNAL LOCK WASHER, SS	PART	NOT SHOWN
79	4	8425101	88 EXTERNAL LOCK WASHER, SS	PART	NOT SHOWN
80	1	8889902	SINGLE SIDED VINYL FOAM TAPE, 3/4X11/8	PART	4.7 FT



- NOTES:
1. PLACE FOAM TAPE UNDER SHIELD LIP TO PREVENT IT FROM RATTLING AGAINST THE CONDENSER.
 2. USE LOCITITE 242 ON NUTS ATTACHING ISOADAPERS TO BASE PLATE AND SUPPORT PLATE, 8 PLACES
 3. 8 TO SCREWS ATTACHING MOTOR ADAPLER PLATE TO MOTOR, 4 PLCS
 4. PLACE A PIECE OF 1/16X1/2 SINGLE SIDED FOAM TAPE WHERE COMPRESSOR COULD TOUCH GUARD BOWL ON START UP.
 5. GROUND PER IEC SPEC 35573, 4 PLS
 6. SPRAY LUBRICANT ON MOTOR SHAFT, WIPE OFF EXCESS
 7. APPLY PERMAQUARD AROUND ENTIRE INSIDE LIP OF MOTOR HOOD AT GUARD BOWL INTERFACE.
 8. PLUG HOLES IN GUARD BOWL UNDER BOOT WITH PERMAQUARD OR SIMILAR, 6 PLACES
 9. HERMETICALLY SEAL PROCESS & DISCHARGE TUBING BY CRIMPING-OFF, REMOVING SCRAMMERS & BRAZING OFF ENDS AFTER CHARGING
 10. APPLY LOCITITE 592 TO ALL HD SCREWS WHEN ATTACHING SUCTION FCCT-4 PLS.
 11. SHIP THIS WHIZ-LOCK SCREW TO SECURE 60616(SEC ASSY) TO BASE.
 12. PLACE NYLON SHIM AT CENTER OF PCB BOARD ASSEMBLY FACING THE GUARD BOWL.
 13. GROUNDING LOCATION FOR 51421A WIRE HARNESS.

REVISIONS

REV	ZONE	BY	DATE	ECO	APP'D	DATE
7		PI	7/7/98	4597	CI	7/10/98
8		KMM	8/19/98	4654	KMM	8/20/98
9		PL	11/20/98	4811	CI	11/28/98
10		KMM	1/5/99	4828	CI	1/13/99
11		PL	3/10/99	4873	CI	3/17/99
12		PL	4/13/99	4985	CI	4/23/99
13		PI	11/3/99	5188	CI	12/15/99
14		PL	12/21/99	5203	CI	12/15/00
15		PL	5/2/00	5386	CI	5/3/00
16		QHN	08/20/01	5933	CI	10/25/01

ORIGINAL DOCUMENT

PROENGINEER MODEL NO.: 50940-45.ASM

PARTS LIST: SEE PLS

ThermoIEC

TITLE: BASH ASSY CL3R

SCALE: 1/3

PRO-E SHEET 1 OF 1

MATERIAL:		FINISH:	
	N.A.		N.A.
5533	FORMA ILR		
3755, 3756, 3757	LI 3R		
ASSY NO.	USED ON		
APPLICATION		SURFACE QUALITY	
BY	DATE		
PCS	9/8/96		
DRAWN	CI	TOLERANCES	
CHECKED	CI	PLACE DEC	PLACE DEC
APPROVED	CI	ANGLES	1/2