

## ***Section 7: ILLUSTRATED PARTS***

This section provides illustrations of RC-5B PLUS assemblies and each illustration is keyed by item numbers to an accompanying parts list. The parts lists provide the part numbers and descriptions of each item that is called out on the illustrations. When ordering replacement parts, specify the part number and description, and the serial number of the centrifuge.

**NOTE** Tables throughout this section contain part numbers valid at the time of printing. All part numbers are subject to change without notice. Part numbers in BOLD type are currently stocked at our parts depot and are routinely available. Other parts listed will be provided on a *best effort* basis.

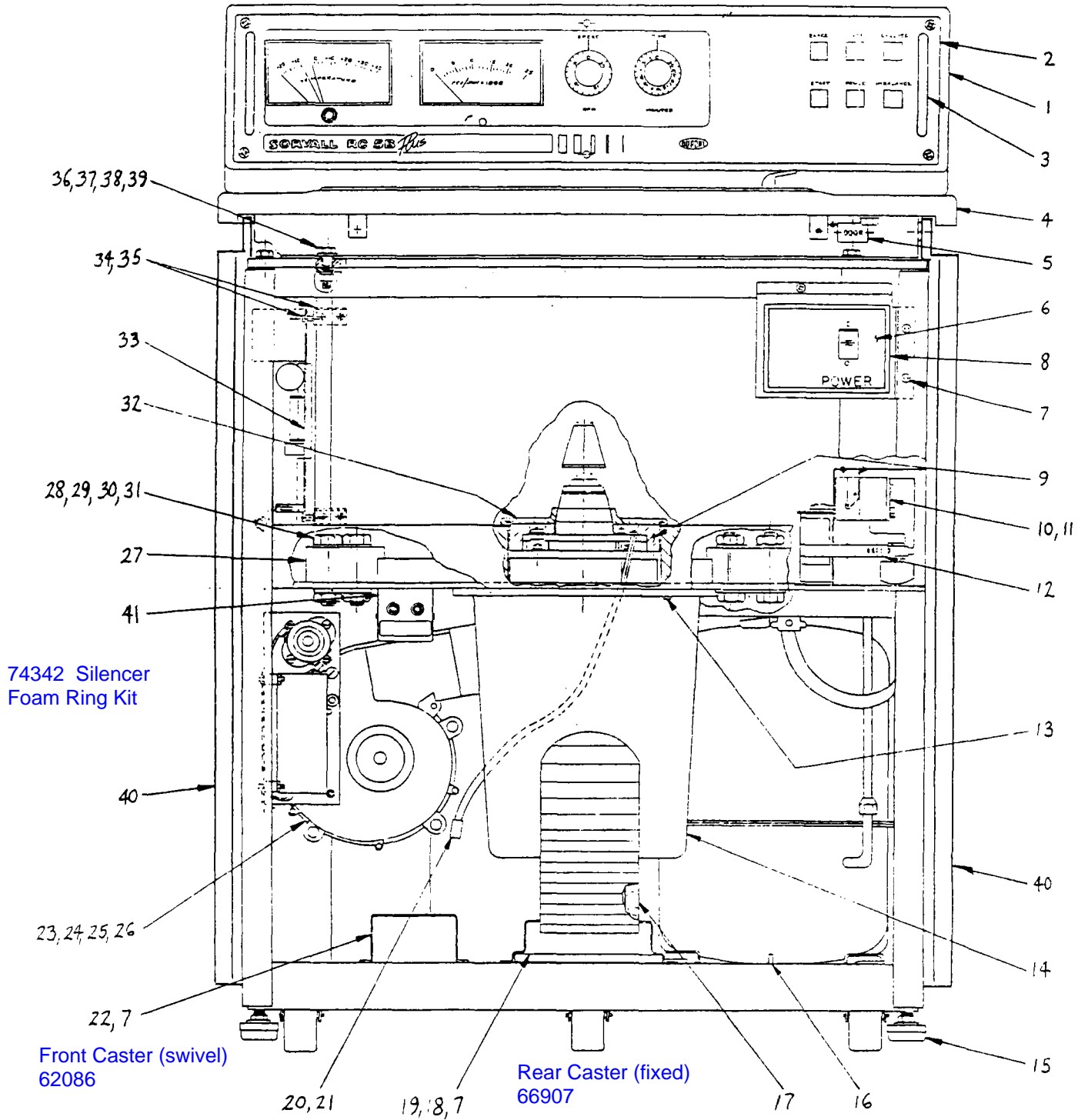


Figure 7-1. RC-5B PLUS Assembly, Front View

**Table 7-1. RC-5B PLUS Assembly, Front View**

Item No.	Description	Part No.
1	RC-5B PLUS Console Assembly	74027
2	Front Console Panel Assembly	74040
3	Front Console Panel Handle	55531
4	Deck Assembly	74025
5	Door Button	50689
6	RC-5B PLUS Panel Assembly, Main Breaker	74116
7	Screw, Pan Head with Lockwasher, Phillips, SST, #8-32 x 3/8 long	91420
8	Bezel, Circuit Breaker Panel	55508
9	Foam Insulating Disc	50415
10	Relay, Potential	91489
11	Screw, Pan Head with Lockwasher, Phillips, SST, #8-32 x 1/4 long	62828
12	Bracket, Adjustable Band	91057
13	Cap Screw, Hex Head with Lockwasher, SST, 1/4-20 x 1 long	91455
14	Silencer Assembly	74074
15	Leveling Pad	60619
16	Cap Screw, Socket Head-Hex, STL, 1/4-20 x 1-1/4 long	62844
17	Exhaust Duct Assembly	74035
18	Filter Assembly (includes foam strips)	74037
19	Filter Holder	74038
20	Imbalance Detector Harness Assembly	50778
21	Connector	68683
22	Bracket	56058
23	Blower Motor Assembly	74119
24	Bracket, Blower Motor	74047
25	Screw, indented Hex with Lockwasher, STL, 1/4-20 x 1/2 long	66543
26	Nut, Hex with Lockwasher, #8-32	91482
27	Hold Down Block (Guard to Base)	20839
28	Bolt, Hex Head, Grade 5 STL, Cad Pl, 5/8-11 x 1-1/2 long	65646
29	Flat Washer, 5/8. STL, Cad Pl, 1-1/4 O.D. x 41/64 I.D. x 1/16 thick	65647
30	Split Lockwasher, 5/8, STL, Cad Pl	65648
31	Nut, Hex, Jam, Grade 5, STL, 5/8-11	64784
32	Gyro Cover Seal	50414
33	Control Printed Circuit Board Assembly	12987 <del>74095</del>
34	Bracket, Control P.C. Board	20137
35	Screw, Pan Head with Lockwasher, Phillips, STL Zinc Plated, 6-32 x 1/2	91403
36	Nut, Hex, STL, Zinc Plated, 3/8-16 x 21/64 thick	91385
37	Split Lockwasher, STL, Zinc Plated, 3/8 x 0.070 thick	91380
38	Flat Washer, 13/32 I.D. x 13/16 O.D. x 1/16 thick	61627
39	Cap Screw, Hex Head, STL, Zinc Plated, 3/8-16 x 1-1/2 long	91450
40	Panel Assembly, Right Side and Left Side	74111
41	Brush Warning Assembly	20747

RC-5B+/5C+ Preventative Maintenance Kit

12011

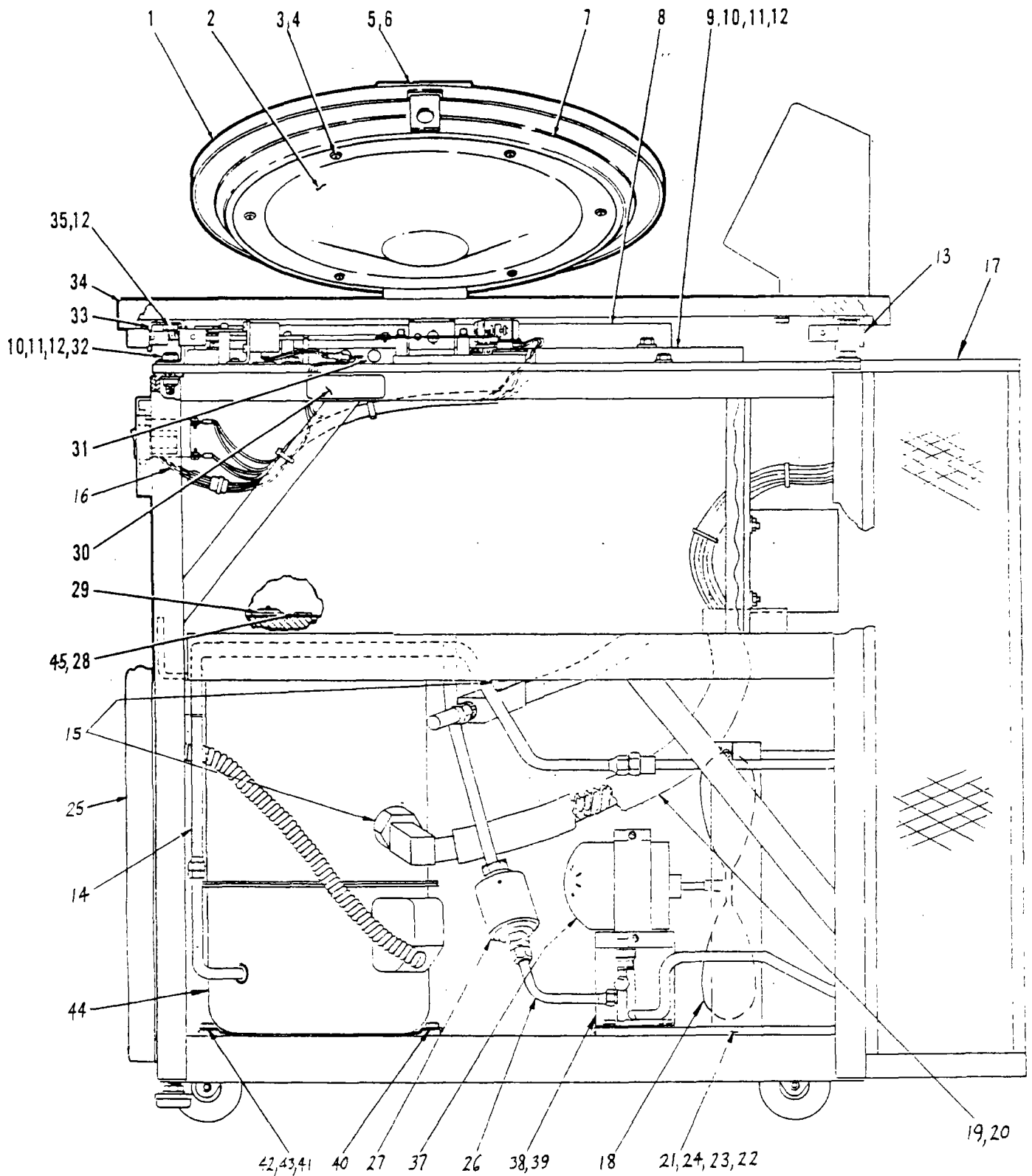


Figure 7-2. RC-5B PLUS Assembly, Right View

**Table 7-2. RC-5B PLUS Assembly, Right View**

Item No.	Description	Part No.
1	Door Assembly	74033
2	Diffuser Assembly	74034
3	Washer, Finishing, SST, #10	60683
4	Screw, Wood, Oval Head, Phillips, SST, #19 x 1-1/4 long	65676
5	Door Handle	74028
6	Cap Screw, Flat Head, Socket Hex, Black Oxide, #8-32 x 1 long	66982
7	Upper Door Seal	50473
8	Shroud	50094
9	Evaporator Top Plate	50610
10	Cap Screw, Hex Head, STL, 3/8-16 x 1-1/2 long	91450
11	Flat Washer, 3/8, STL, Cad Pl, 13/32 I.D. x 13/16 O.D. x 1/16 thick	61627
12	Split Lockwasher, 3/8, STL, STL, Zinc Plated	91380
13	Top Deck Support Assembly, Rear	50616
14	Tube Assembly (Compressor to Condenser)	74115
15	Seal, Teflon® Fiber	61768
16	Harness Assembly, Main Breaker	74131
17	Backpack Assembly	74316 74048
18	Fan Blade	91362
19	Suction Tube Assembly	74068
20	Suction Line Insulation (5-1/2 inches)	20588
21	Condensing Unit Assembly	74081
22	Flat Washer, 1/4, STL, Zinc Pl, 0.281 I.D. x 0.734 O.D. x 0.063 thick	91366
23	Split Lockwasher, SST, 1/4	63019
24	Cap Screw, Hex Head, STL, 1/4-20 x 1-1/2 long	64281
25	Front Panel Assembly with Insulation	74112
26	Tube Assembly (Valve to Filter Dryer)	74114
27	Filter Dryer	91470
28	Plug, Connector Body, Nylon	66577
29	Air Temp Sensor Assembly	20992
30	Label, High Voltage	61223
31	Cork, #4	66633
32	Nut, Hex, STL, Zinc Plated, 3/8-16	91385
33	Top Deck Support Assembly, Front	50430
34	Deck Assembly	74025
35	Screw, Hex Head, 3/8-16 X 3/4 long, STL, Cad Pl	64743
36	KSB Plug, Outer (Not Shown)	20972
37	Condenser Motor Fan	91392
38	Bracket, Condenser Motor Fan	56277 74056
39	Screw, Indented Hex with Lockwasher, STL, 1/4-20 x 1/2 long	66543
40	Screw, Indented Hex with Lockwasher, STL, 5/16-18 x 1/4 long	91369
41	Grommet, Compressor	91471
42	Screw, Indented with Lockwasher, STL, 5/16-18 x 1-3/4 long	66526
43	Sleeve, Compressor	91472
44	Compressor	91386
45	Flatwasher, 0.304 O.D. x 0.169 I.D.	63085

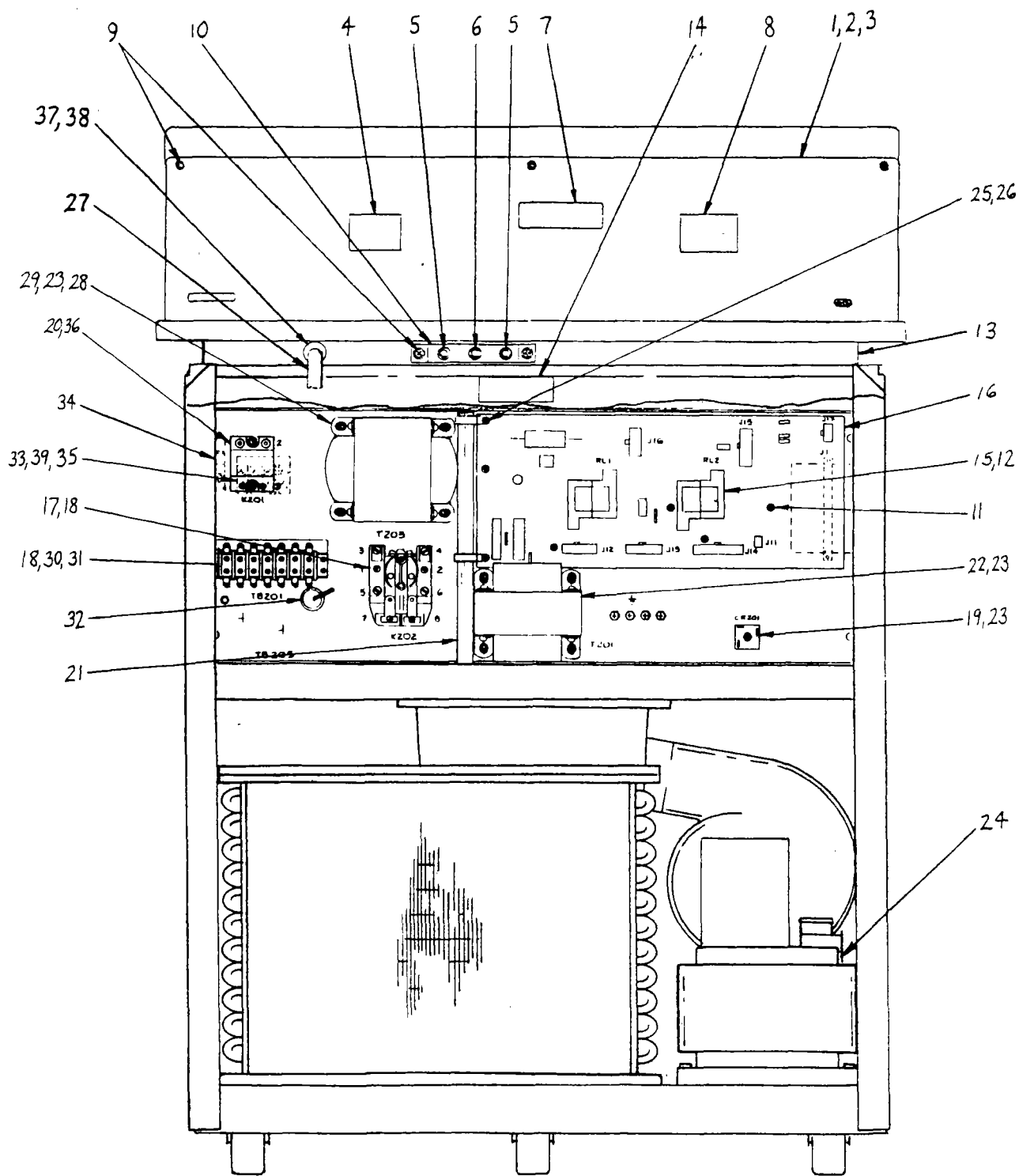


Figure 7-3. RC-5B PLUS Assembly, Rear View

**Table 7-3. RC-5B PLUS Assembly, Rear View**

Item No.	Description	Part No.
1	Console Backplate	74026
2	Cap Screw, Socket Head, STL, 1/4-20 x 3/4 long	91452
3	Lockwasher, External Tooth, SST, #1/4	63937
4	Nameplate	74120
5	Circuit Breaker, 5 Amp, 250 Vac	68716
6	Circuit Breaker, 3 Amp, 250 Vac	66759
7	Label, WARNING	68868
8	Label, CAUTION	67369
9	Screw, Pan Head with lockwasher, Phillips, SST, 8-32 x 3/8 long	91420
10	Breaker Bracket	50624
11	Screw, Pan Head, Phillips with External Tooth Washer, 6-32 x 1/4	91494
12	Relay, 3 PDT, 28 Vdc/115 ac, 10 Amp	91777
13	Support Assembly, Top Deck (Rear)	50616
14	Label, Danger, High Voltage	61223
15	Clip, Hold down	91496
16	Lower Control Panel P.C. Assembly	-74306 <del>74089</del> 74178
17	Relay, Power, Heavy Duty, 120 V	91351
18	Screw, Pan Head, Phillips, STL, Zinc Pl, 8-32 x 3/4 long	91481
19	Brake Rectifier	923627
20	Screw, Pan Head with lockwasher, SST, Zinc Pl, 8-32 x 1/4 long	91493
21	Main Harness Assembly	74134
22	Transformer Assembly	74073
23	Nut, Hex with Lockwasher, SST, #10-32	91410
24	Reactor Assembly	74075
25	Nylon Cable Tie Bar Lock (for Main Harness Assembly)	61518
26	Screw, Pan Head with Lockwasher, 6-32 x 1/2 long	91456
27	Power Cord	64065
28	Transformer Assembly	After 7/1/02 new transformer #76522 74563
29	Flat Washer, SST, #10	61652
30	Terminal Block, Barrier Type, 30 Amp Special	65997
31	Insulator, Terminal Block	66112
32	Grommet, 3/4 I.D. x 1-1/8 O.D. x 1/4 thick	62926
33	Terminal Strip, 4 Pole, 40 Amp, 380/450V	67415
34	Connector, Cable, #14-6 AWG Range, #10 MTG	65699
35	Insulator, Terminal Block	50352
36	Relay, Solid State, 3-28 Vdc	68794
37	Strain Relief	68037
38	Nut for Strain Relief	68038
39	Nut, Hex with lockwasher, SST, #6-32	91445

Line Filter

92005

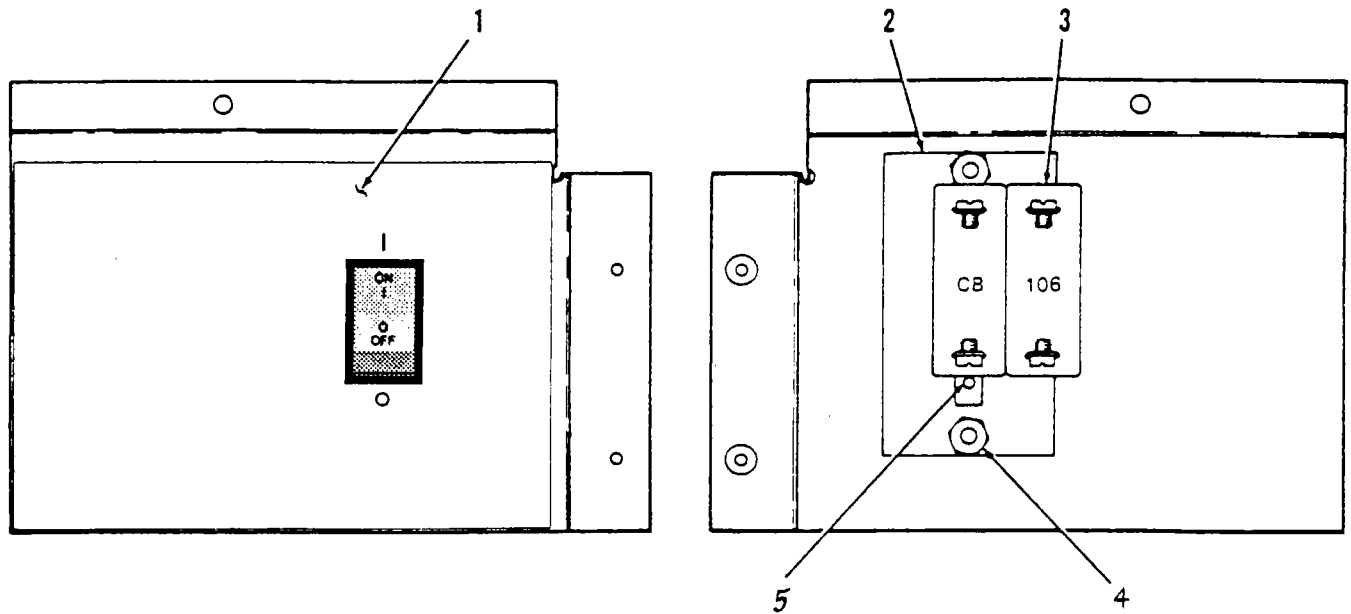


Figure 7-4. Panel Assembly, Main Breaker

**Table 7-4. Panel Assembly, Main Breaker**

Item No.	Description	Part No.
—	Panel Assembly, Main Breaker	74116
1	Overlay, Panel	74021
2	Plate, Mounting, Circuit Protector	50097
3	Circuit Protector, Two Pole, 30 amp	91476
4	Hex Nut with Lockwasher, SST, #10-32	91410
5	Screw, Flat Head, Slotted, SST, UNC, #6-32 x 1/4 long	60674



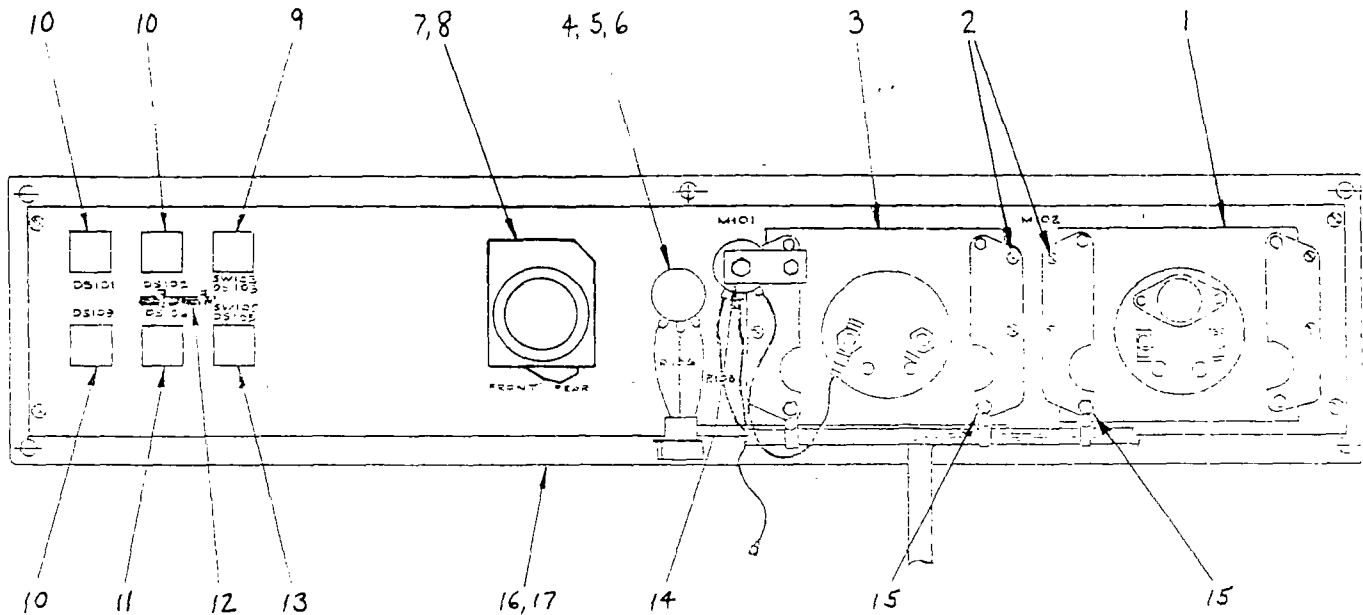


Figure 7-5. RC-5B PLUS Front Console Panel Assembly (Rear View)

Table 7-5. RC-5B PLUS Front Console Panel Assembly

Item No.	Description	Part No.
—	Front Console Panel Assembly	74040
1	Temperature Meter, -20°C to +40°C	90794
2	Screw, Pan Head with lockwasher, Phillips, STL, #6-32 x 3/8 long	91417
3	Speed Meter, rpm	66639
4	Potentiometer	20855
5	Spacer	04232
6	Knob, Speed Control	50134
7	Timer, 60 Hz	20868
8	Timer, 50 Hz	20867
8	Knob, Timer, 120 minute	50135
9	Switch, Pushbutton Assembly	74125
10	Indicator, Lighted Assembly, White	74122
11	Indicator, Lighted Assembly, Red	74124
12	Harness Assembly, Console	74041
13	Switch, Pushbutton Assembly, MOM	74123
14	Bracket, Potentiometer	20727
15	Nut, Hex, SST, 6-32	91445
16	Front Panel Overlay	74040
17	Front Panel Console	74071
—	Front Console Panel Handle (Not Shown)	55531
—	Bezel, Meter (Not Shown)	51242

LED Lamp

74179

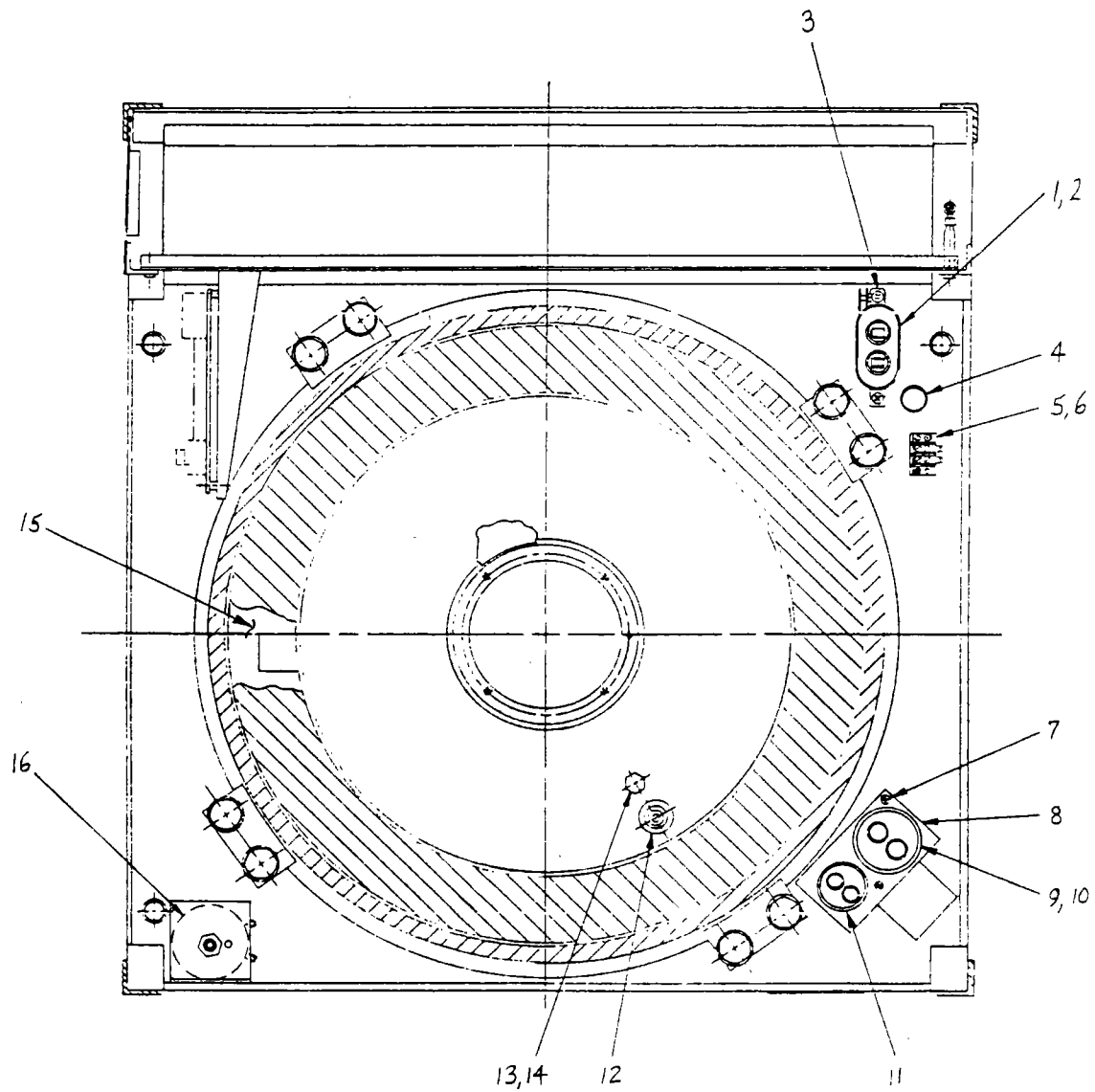


Figure 7-6. RC-5B PLUS Evaporator Assembly, Top View

**Table 7-6. RC-5B PLUS Evaporator Assembly, Top View**

Item No.	Description	Part No.
1	Capacitor, Motor Run, 20 $\mu$ F	66961
2	Bracket, Capacitor, Universal Wrap	66957
3	Screw, Pan Head with Lockwasher, Phillips, SST, 8-32 x 3/8 long	91420
4	Bushing, Snap-in	91430
5	Terminal Block, Barrier Type, 2 Terminal, 15 amp	64723
6	Screw, Pan Head with Lockwasher, SST, UNC, 6-32 x 3/4 long	91456
7	Screw, Pan Head with Lockwasher, SST, 10-32 x 1/2 long	91405
8	Bracket, Capacitor	76262
9	Capacitor, Start 176-216 $\mu$ F, 330 V, 15 K $\Omega$	91475
10	Jumper Assembly	74144
11	Capacitor, Run, 25 $\mu$ F, 370 V	91474
12	Air Temperature Sensor Assembly	20992
13	Plug, Connector Body, Nylon	66577
14	Flatwasher, 0.304 O.D. x 0.169 I.D.	63085
15	Insulation, Evaporator	20094
16	Torque Trimmer Assembly	74133

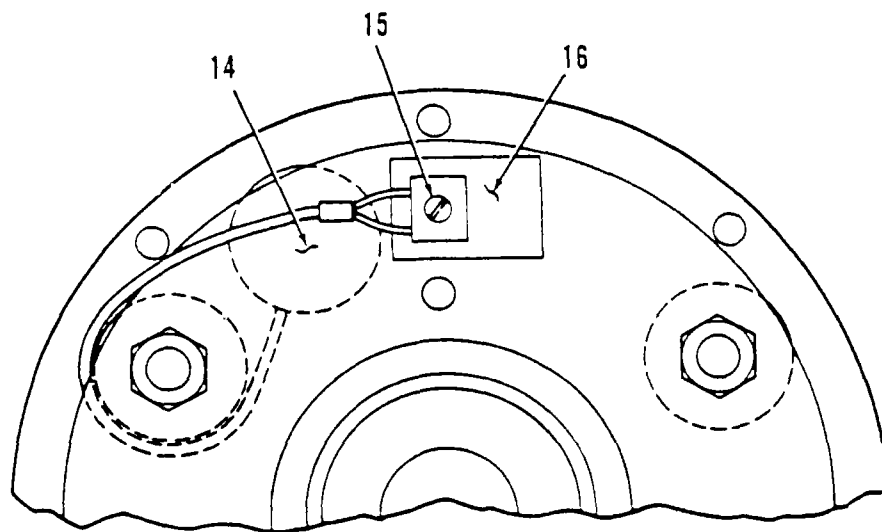
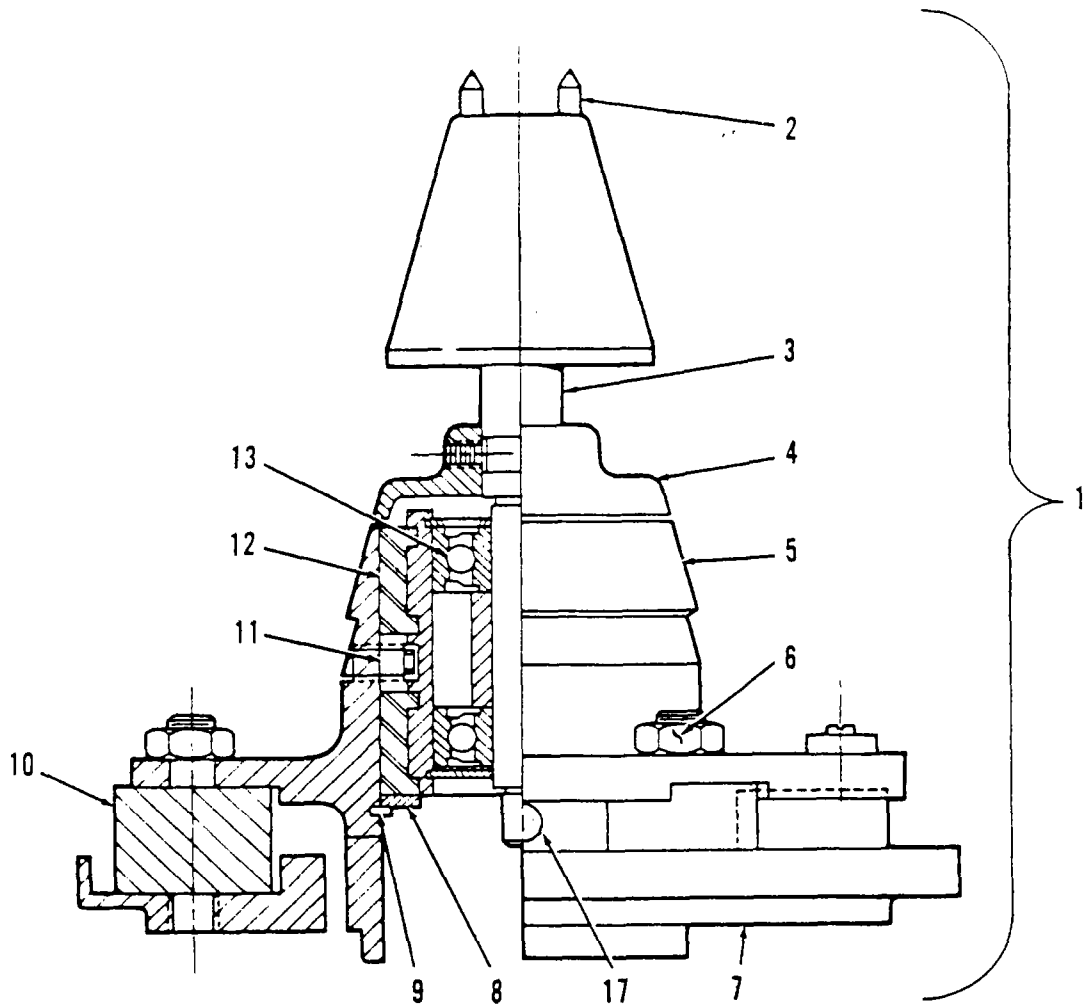


Figure 7-7. RC-5B PLUS Drive Assembly

**Table 7-7. RC-5B PLUS Drive Assembly**

Item No.	Description	Part No.
1	RC-5B PLUS Gyro Action Drive Assembly	50833
2	Pin, Tapered Spindle	204742
3	Spindle Assembly	12348
4	Slinger, Sealing	50578
5	Mounting Plate, Upper	50812
6	Nut, Hex, SST, UNC, 5/16-18	67273
7	Mounting Plate, Lower	50407
8	Washer, Support	50409
9	Retaining Ring	67270
10	Mount, Flex-Bolt	50408
11	Set Screw, Hex Socket, SST, UNC, #1/4-20 x 3/8 long	67272
12	Housing Assembly, Bearing	50405
13	Bearing Replacement Kit	12342
14	Imbalance Detector	50843
15	Screw, Pan Head, Slotted, SST, UNC, #2-56 x 1/4 long	63818
16	Insulator	67710
17	Plug, Access Hole	67341

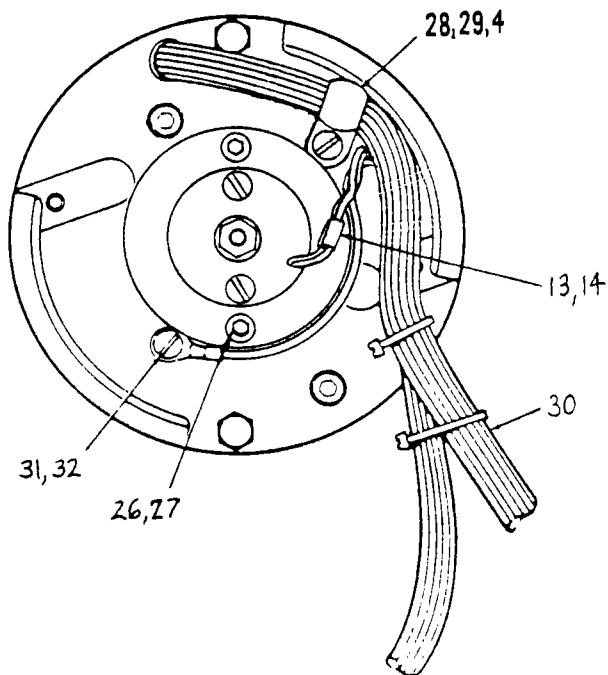
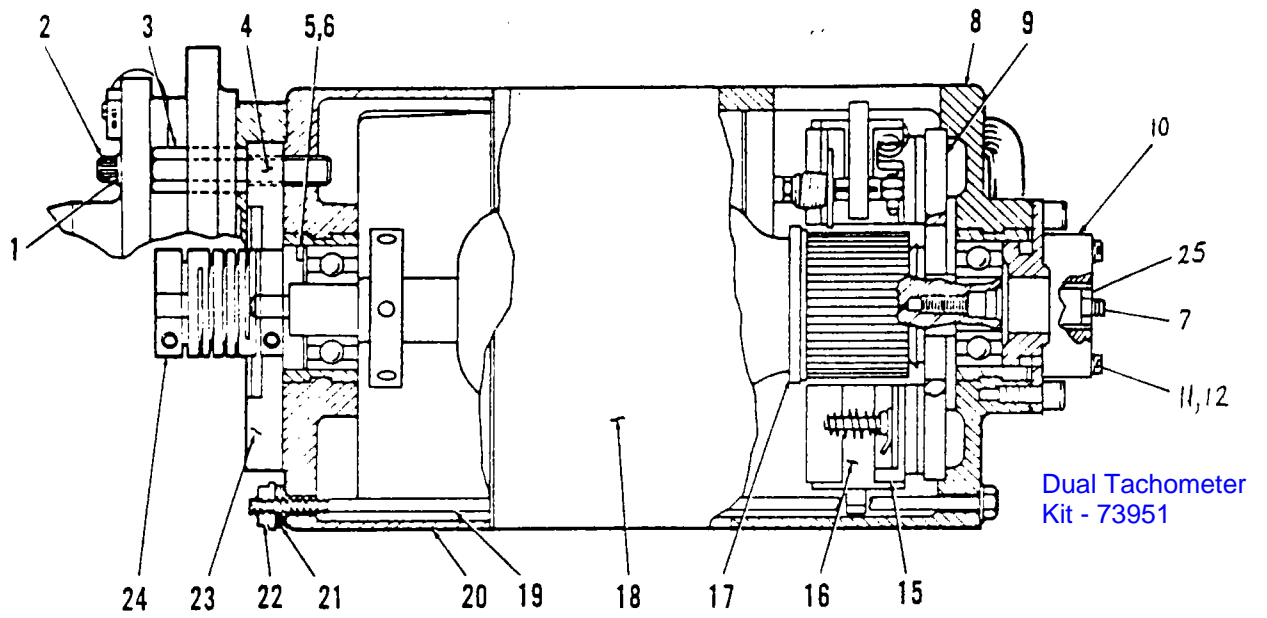


Figure 7-8. RC-5B PLUS Motor Assembly

**Table 7-8. RC-5B PLUS Motor Assembly**

Item No.	Description	Part No.
—	RC-5B PLUS Motor Assembly	74061
1	Split Lockwasher, #10, SST, 0.040 thick	63016
2	Cap Screw, Socket Head Hex, SST, UNF, #10-32 x 3/4 long	60568
3	Standoff, 7/16 Hex, Male 1/2-20 Female #10-32	50418
4	Adhesive, Sealant, Loctite, #222	65811
5	Washer, Spring, Wavy, 1.051 I.D. x 1.351 O.D. x 0.99 H	67281
6	Shim, 0.010 thick	20483
6	Shim, 0.020 thick	20509
6	Shim, 0.040 thick	20510
7	Adapter, Tachometer Generator	06042
8	End Bell, Lower, Motor	74142
9	Disc, Insulating, Motor	20478
10	Tachometer Generator	20524
11	Screw, Pan Head, SST, Slotted, Self-Lock, #5-40 x 3/4 long	61860
12	Lockwasher, Internal, SST, #5	61496
13	Contact, Electrical Connector, Male, 20-14	61864
14	Connector, Body, Plug, 1 Position	61940
15	Holder Assembly, Plate & Brush, RC-5B PLUS	74062
16	Brush, Commutator, 1-1/4 long x 0.990 W x 1/4 thick	66609
17	Armature Assembly includes	74051
	Armature	50419
	Slinger	74050
	Ball Bearing, Extra Quiet	90984
	Slinger	204672
	Wafer Insulation	50824
	Bearing Spacer	50088
18	Housing & Stator Assembly, Motor (Machining)	20612
19	Rod, Tie, Motor	20507
20	Bell, End, Upper, Motor	50421
21	Washer, Spring, Belleville, 0.19 I.D. x 0.375 O.D. x 0.03 H x 0.02 thick	61980
22	Nut, Flange, Low Carbon STL, Zinc Plated, UNC #10-24	91442
23	Plate, Preload	50416
24	Coupling Assembly	12345
25	Nut, Hex, Flexloc, Aluminum, #6-32	60554
26	Cap Screw, Socket Head, Hex, STL, Zinc Plated, #10-24 x 1/2 long	91443
27	Split Lockwasher, #10 x 0.040, SST	60346
28	Clamp, Cable, Plastic, 1/2 inch diameter	91492
29	Screw, Pan Head, Phillips, SST, UNC, #8-32 x 3/8 long	91420
30	Harness Assembly, Motor	74069
31	Screw, Pan Head, with Lockwasher, SST UNC, #10-24 x 1/4 long	91424
32	Lockwasher, #10 External Tooth, SST	67896

10

Dual Tachometer Kit

92312

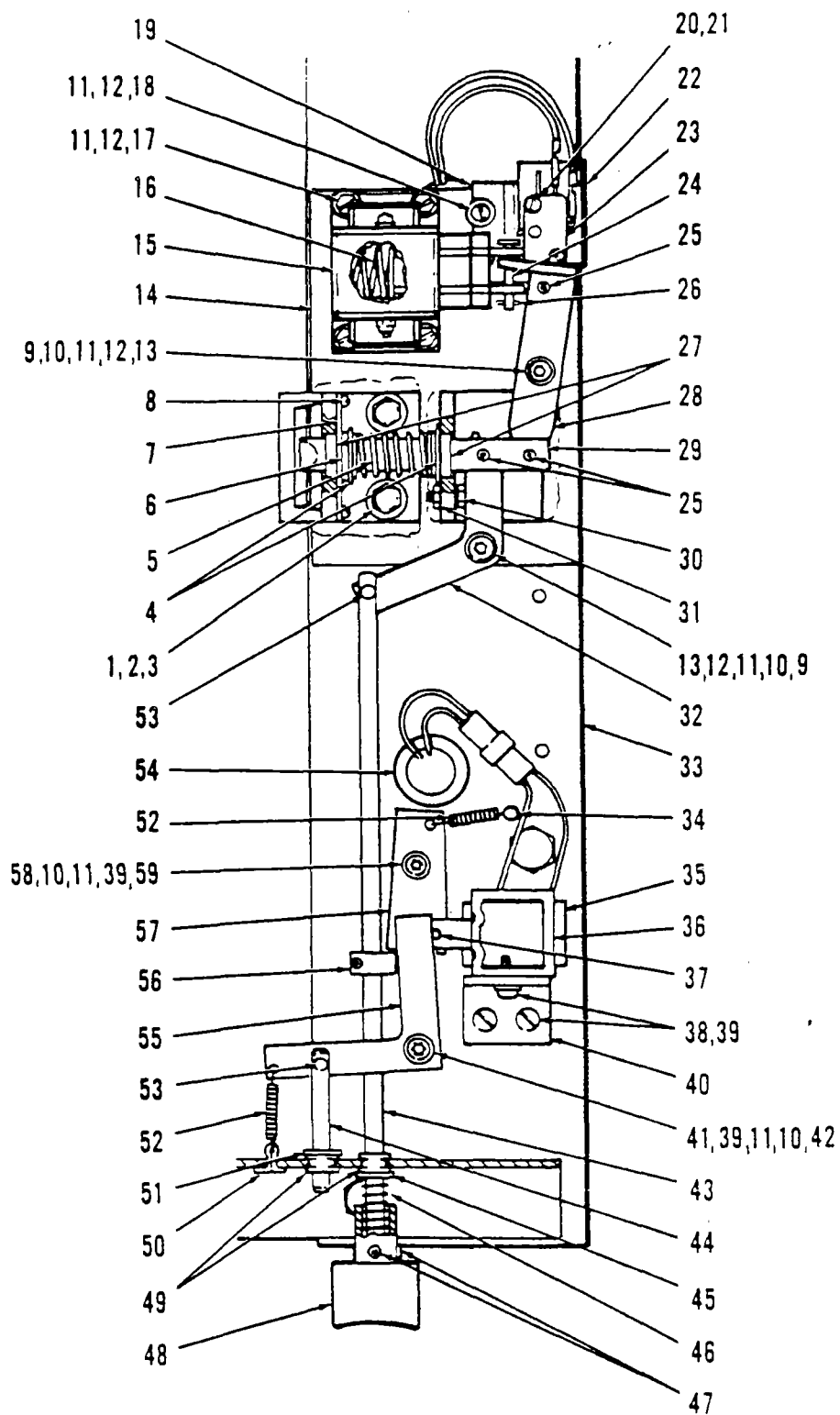


Figure 7-9. RC-5B PLUS Door Interlock Assembly (Part A)



**Table 7-9. RC-5B PLUS Door Interlock Assembly (Part A)**

Item No.	Description	Part No.
1	Flat Washer, STL, 5/16, 11/32 I.D. x 11/16 O.D. x 1/16 thick	60885
2	Split Lockwasher, 5/16, SST, 0.078 thick	63023
3	Screw, Hex Head, STL, 5/16-18 x 1-1/4 long	64747
4	Flat Washer, 0.515 I.D. x 0.875 O.D. x 0.016 thick, SST, Cad Pl	66341
5	Spring, Compression, 0.53 I.D. x 2.3 long, 0.038 Wire Diameter, SST	50076
6	Ring, Retaining, External, 1/2 inch Shaft Diameter	62503
7	Retainer, Bushing	50111
8	Screw, Pan Head, SST, Slotted, UNC, #4-40 x 3/16 long	62913
9	Support, Linkage, Interlock	50572
10	Flat Washer, Nylon, 0.39 I.D. x 0.625 O.D. x 0.031 thick	61889
11	Flat Washer, #10, SST, 13/64 I.D. x 7/16 O.D. x 0.031 thick	61652
12	Split Lockwasher, #10, SST, 0.040 thick	60346
13	Cap Screw, Socket Hex Head, SST, UNRF, #10-32 x 1-1/4 long	90340
14	Weldment Assembly, Door Interlock	50077
15	Solenoid, Pull Type, Modified	50872
16	Compression Spring	68745
17	Cap Screw, Socket Hex Head, STL, UNF, #10-32 x 1/2 long	64301
18	Screw, Pan Head, Slotted, SST, UNF, #10-32 x 3/8 long	61597
19	Microswitch Bracket Assembly	50887
20	Screw, Pan Head, Slotted, SST, UNC, #4-40 x 5/8 long	62396
21	Split Lockwasher, #4, SST, 0.020 thick	63004
22	Insulator, Fish Paper, 1-19/32 x 1 x 0.015 thick	62245
23	Microswitch, SPDP	66753
24	Pin, Clevis, 0.187 diameter x 0.75 inch long	68080
25	Pin, Spring, Spiral, 1/8 diameter x 5/8 long	63238
26	Pin, Hitch, 0.042 diameter x 31/32 long	67567
27	Bearing, Nylon, Flanged, 1/2 I.D. x 7/32 long	66314
28	Link, Solenoid	50870
29	Plunger, Door Interlock	50871
30	Screw, Hex Head, SST, Unslotted, UNC, #6-32 x 5/8 long	68746
31	Nut, Hex, SST, #6-32	60074
32	Link, Manual Release	50869
33	Door Interlock Support Plate	50776
34	Post, Spring, 0.188 x 1.50 long	68161
35	Tape, Insulating, 1 inch x 1-1/2 inch	67710
36	Solenoid Assembly	50803
37	Pin, Spring, Self Locking, 0.093 x 0.62	67904
38	Screw, Binding Head, SST, #10-32 x 5/16 long	60855
39	Split Lockwasher, SST, #10 x 0.040 thick	60346
40	Bracket, Solenoid	50501
41	Cap Screw, Socket Head, SST, 10-32 x 1-7/8 long	67906
42	Spacer, Round, 0.194 I.D. x 1/2 O.D. x 1-7/16 long	68160
43	Rod, Door, Manual Release	50881
44	Rod, Solenoid Release	50522
45	Flat Washer, 1/4, STL, Zinc Plated, 0.281 I.D. x 0.734 O.D. x 0.063 thick	91366

**Table 7-9. RC-5B PLUS Door Interlock Assembly (Part A)**

Item No.	Description	Part No.
46	Spring, Compression, 0.360 O.D. x 1.00 FL x 0.032 Wire	67899
47	Setscrew, Socket Head, Cup Point, STL, #10-32 x 3/16 long	64342
48	Button, Door Interlock	50689
49	Bearing, Nylon, Snap-in, Shaft Size 0.25 diameter	63985
50	Pin, Cotter, SST, 1/16 x 1/2 long	60315
51	Ring, Retaining, External, 1/4 shaft diameter	67903
52	Spring, External, 0.18 O.D. x 1.00 long x 0.018 Wire	68209
53	Pin, Cotter, Hairpin, SST, 0.092	66979
54	Bushing, Snap, 3/4 I.D., 1.0 Mounting Hole	68214
55	Arm, Solenoid Release	50612
56	Collar, Clamp Tite	68172
57	Link, Interlock	50502
58	Spacer, Round, 1/2 O.D. x 0.194 I.D. x 1-1/8 long	67900
59	Cap Screw, Socket Head, SST, #10-32 x 1-11/16 long	60580
—	Door Interlock Assembly (Items 1-32)	50868

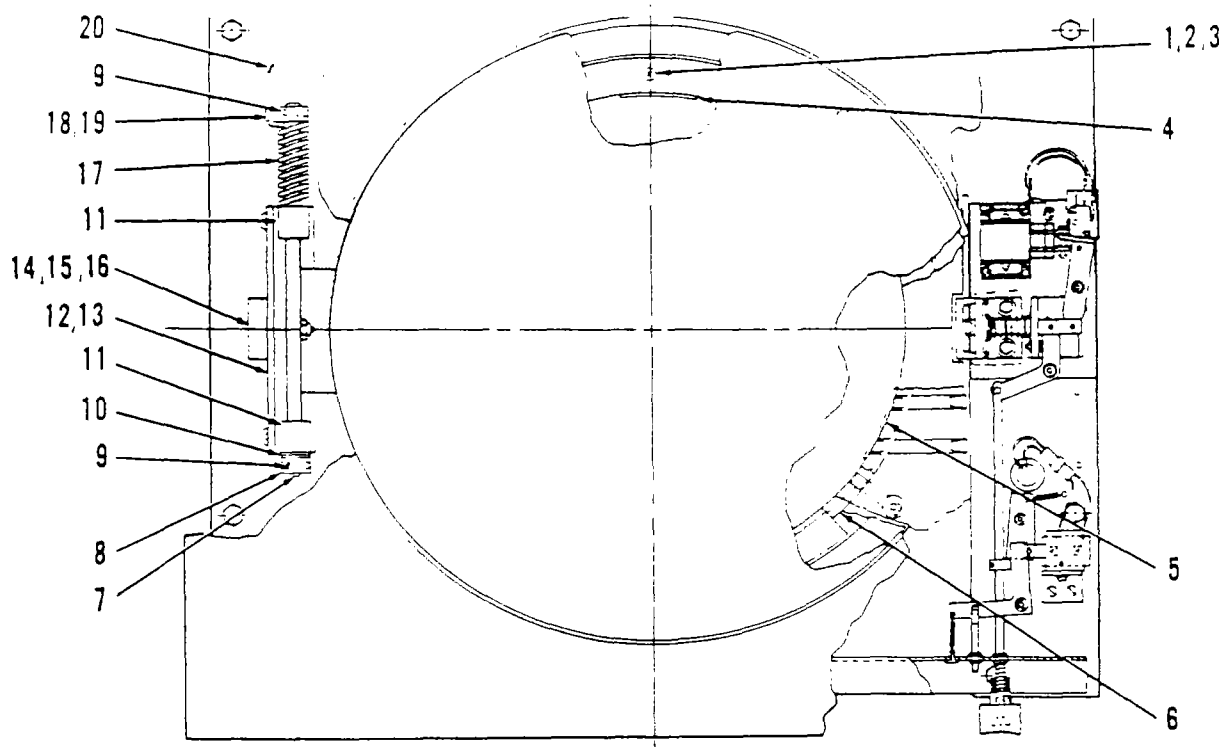


Figure 7-10. RC-5B PLUS Door Interlock Assembly (Part B)

**Table 7-10. RC-5B PLUS Door Interlock Assembly (Part B)**

Item No.	Description	Part No.
1	Screw, Flat Head, Phillips, Wood #10 x 1-3/4 long	65660
2	Seal Ring, Door, Lower	50079
3	Shroud	74059
4	Label, Rotation	62541
5	Stopper, KSB Outlet	20845
6	Lower Seal Ring	20006
7	Pin, Spring, Spiral 1/4 diameter x 1 long	63240
8	Stop, Door	50101
9	Pin, Spring, Spiral 3/16 diameter x 1 long	63239
10	Flat Washer, Nylon, 1/2 I.D. x 1 O.D. x 1/16 thick	66349
11	Block, Mounting, Shaft (Spring)	50102
12	Bracket, Mounting	50083
13	Shim	66183
14	Switch, Push Button, <del>SPDT</del> DPDT	91457 <del>66383</del>
15	Nut, Thin Hex, Brass, 3/8-32	66668
16	Washer, Internal Tooth, SST, 3/8, 0.388 I.D. x 0.687 O.D.	62033
17	Spring, Torsion, .55 I.D. x 2.8 long	50106
18	Setscrew, Slotted, Cup Point, 1/4-20 x 7/8 long	66743
19	Retainer Spring	50100
20	Plate, Support, Hinge	50080

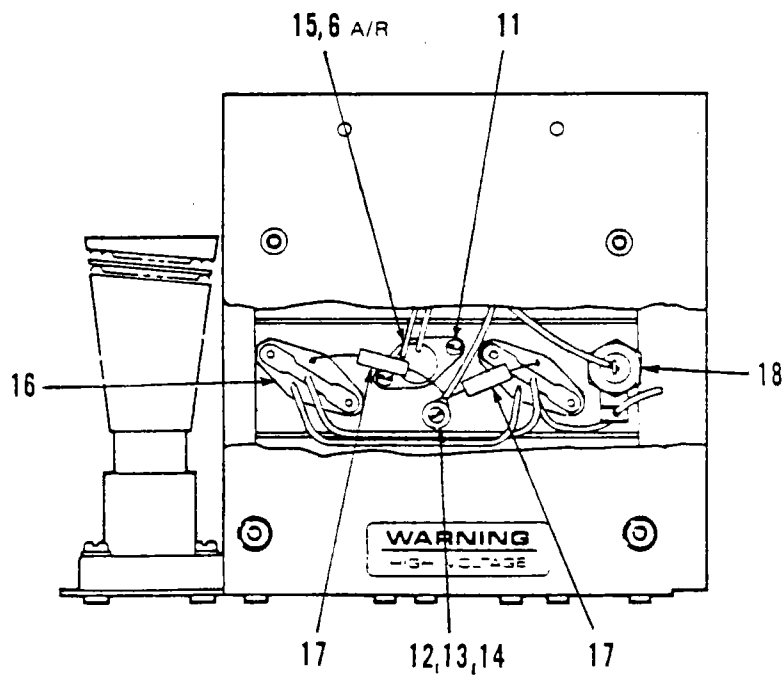
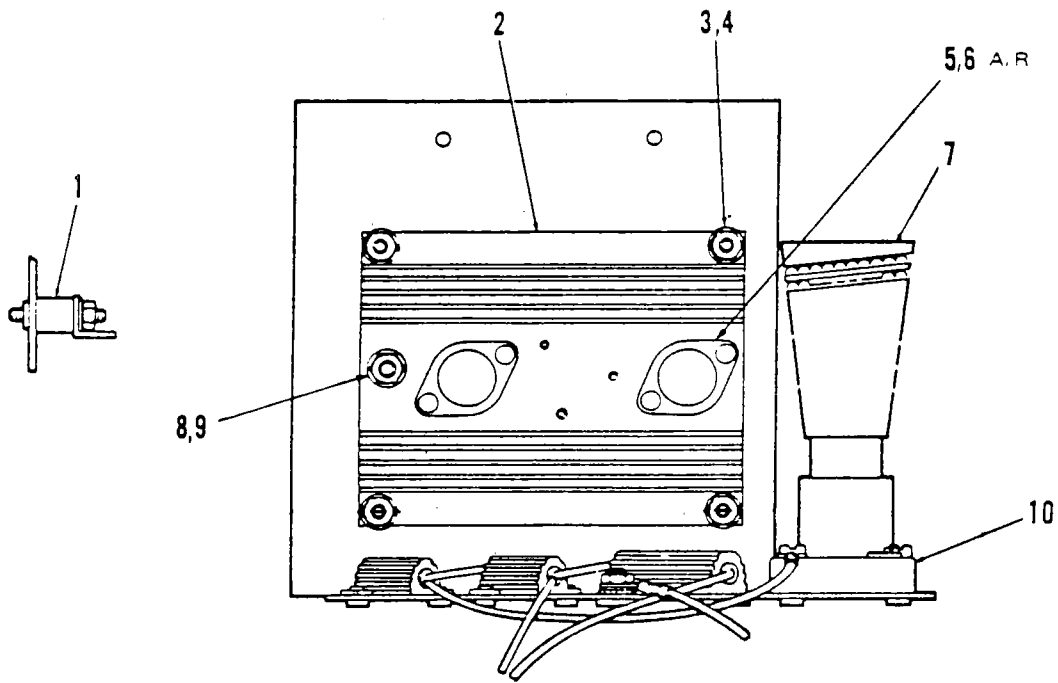


Figure 7-11. RC-5B PLUS Constant Current Brake Assembly

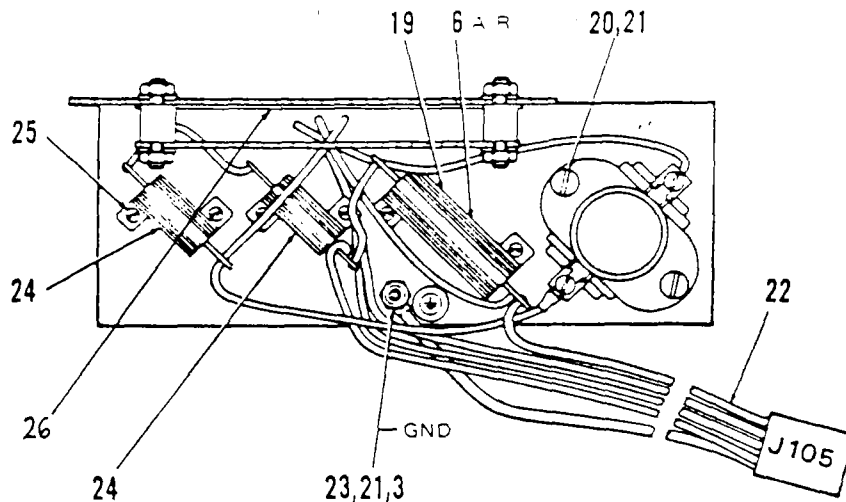


Figure 7-11. RC-5B PLUS Constant Current Brake Assembly (continued)

**Table 7-11. RC-5B PLUS Constant Current Brake Assembly**

Item No.	Description	Part No.
—	Constant Current Brake Assembly	50687
1	Standoff, Male, #10-32, Delrin, Norelcom #51130-R-D-0.500 with 0.375 long THRD	68158
2	Heatsink	50770
3	Nut, Hex, SST #10-32	60012
4	Flat Washer, SST, #10, 13/64 I.D. x 7/16 O.D. x 0.031 thick	61652
5	Transistor, Power NPN, 2N3055	920505
6	Thermal Compound, 8 oz jar, Wakefield #120-8	N/A
7	Resistor, Braking, 2.7 Ohms, 1000 W	61487
8	Nut, Hex, SST, #1/4-20	61141
9	Split Lockwasher, #1/4, SST, 0.047 thick	63019
10	Receptacle, Braking, Resistor, 660 W, 250 V	60406
11	Screw, Pan Head, Slotted, UNC, #4-40 x 3/8 long	62395
12	Screw, Nylon, Pan Head, #6-32 x 1/2 long	67606
13	Flat Washer, Nylon, #10 x 1/8 thick	67383
14	Flat Washer, SST, 0.169 I.D. x 0.304 O.D. x 0.032 thick	63085
15	Thermostat	68173
16	Mounting Kit	65580
17	Resistor, Wirewound, 0.010 Ohms, 2 W	68171
18	Rectifier, Silicon, 100 V, 1N249C	68563
19	Resistor, Wirewound, 0.5 Ohms, 30 W	68170
20	Screw, Pan Head, Slotted, SST, UNF, #10-32 x 3/4 long	61118
21	Split Lockwasher, #10 SST, 0.040 thick	63016
22	Harness Assembly, Constant Current Brake	50774
23	Lockwasher, External Tooth, #10, SST	67896
24	Resistor, Wirewound, 0.5 Ohms, 25 W	68169
25	Screw, Pan Head, Slotted, SST, UNC, #4-40 x 3/16 long	62913
26	Insulation, Fishpaper	50879
27	Screw, Pan Head, Phillips, SST, UNF, #10-32 x 1/2 long	65768