

StatSpin[®] Cytofuge[®] 12

VERSATILE CYTOCENTRIFUGE SYSTEM



...Fast, Simple, Economical

...Prepares up to 12
Monolayer Cell Preps

...For a complete range
of body fluids

...Easy to program with
up to 24 protocols

...Adjustable speed, time,
and acceleration

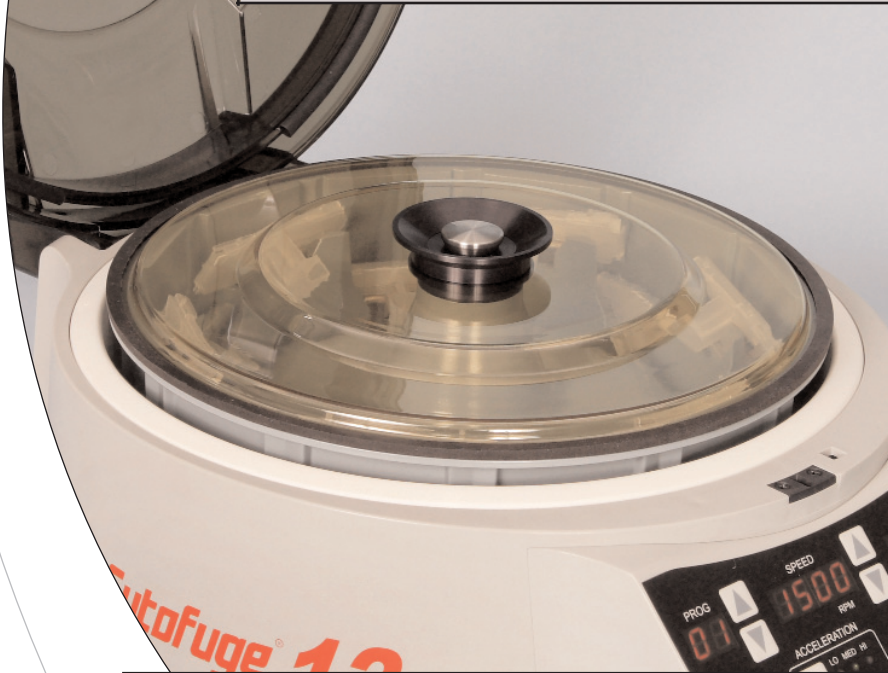
Iris[®]
Sample Processing

THE RAPID, SIMPLE AND ECONOMICAL WAY TO PREPARE

The StatSpin CytoFuge 12 can be used in :

Cytology
Microbiology
Hematology/Oncology
Virology
Research/General use
(F)ISH Testing

12 PLACE CYTOCENTRIFUGE SYSTEM



Compact low profile design. Removable sealed rotor can be loaded in a safety hood.

The StatSpin CytoFuge 12 is a small versatile and economically priced cytocentrifuge that gently deposits cells in a monolayer onto microscope slides. Results are consistent: easy to scan monolayer cell presentations of excellent morphologic detail.

StatSpin CytoFuge 12 is ideal for a complete range of body fluids:

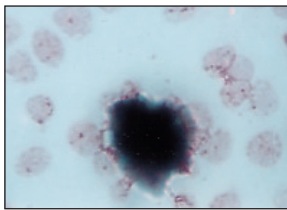
Pleural Fluids	Fine Needle Aspirates
Sputum	Bone Marrow
Urine	Bronchial Washings
Synovial Fluids	Peritoneal Fluids
Pericardial Fluids	Cerebrospinal Fluids

The CytoFuge 12

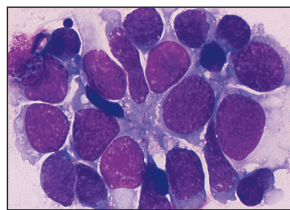
- Compact and quiet - fits in small area
- Sealed rotor minimizes exposure to biohazards
- Optimal control of acceleration/ braking
- Cover Interlock System prevents operation with cover open
- Removable sealed rotor can be loaded/unloaded in a safety hood
- Autoclavable rotor
- Easy to clean inner bowl
- Clear cover allows operator to see rotor during operation
- Accurate and repeatable - speed and cycle time controls accommodate a range of applications
- Variable speeds and times with up to 24 stored protocols
- Handles samples 50-800 uL
- Safety alarms and error codes for self-diagnosis
- 3 acceleration levels

QUALITY MONOLAYER CELL PRESENTATIONS

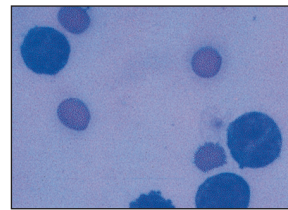
Diagnostic Tool for...Cytology, Hematology, Microbiology and Research



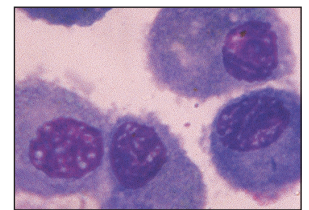
Cerebrospinal Fluid



Retinal Cells

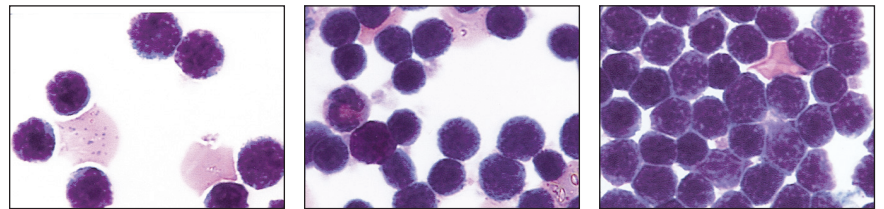


Bone Marrow



Bronchial Aspirate

The CytoFuge 12 offers a choice of filter or gasket-seal concentrator formats. The system handles samples from routine body fluid preps to research methods involving application of multiple cell concentrations or controls on the same slide. A broad range of selectable speed and run times enables precise replication of most procedures developed on other cytocentrifuge systems.



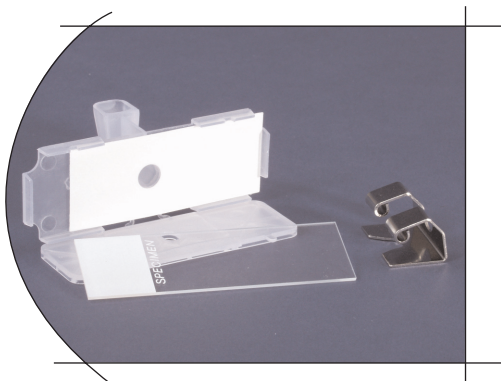
Pleural Fluid (Multiple concentrations of cells on the same slide using three-well Cell Concentrators)

Disposable Filter Concentrators

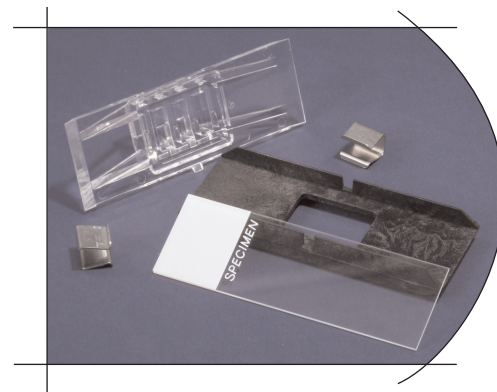
Save time and improve results by eliminating the need to clean and sterilize reusable sample chambers. The device includes a unique hinged backing plate and an integral filter card which absorbs fluid at a controlled rate during the spin cycle. Cells are gently concentrated in a monolayer onto a 7 mm diameter area on the slide with minimal cell loss to the filter.

Reusable/Disposable Cell Concentrators

Available in 1 and 3-well formats. These silicone gasket-sealed devices are made of transparent plastic; they are competitively priced for disposable use. Autoclavable versions for reuse are also offered.



- Sample volume range 50 to 400 μL
- Self-rocking feature prevents premature absorption by the filter – improves cell recovery.
- Stainless steel clip eliminates bulky trunnion carriers, provides consistent results.



- Sample Volume Range
 - 1-well Cell Concentrator 300 to 800 μL
 - 3-well Cell Concentrator 50 to 200 μL
- 3-well Concentrator permits application of different samples, different concentrations or controls on the same slide.
- Reuse capability reduces operating costs.
- Autoclavable version

StatSpin® Cytofuge® 12



Specifications:

Safety Features	<ul style="list-style-type: none"> Cover interlock system Sealed rotor with transparent lid Low voltage drive system (24 V)
Rotor Capacity	<ul style="list-style-type: none"> One to twelve slides
Speeds (Forces)	<ul style="list-style-type: none"> 200-2,000 rpm +/- 5% (28-560 xg)
Acceleration Rates	Low: 45-50 rpm/sec Med: 65-70 rpm/sec High: 85-90 rpm/sec
Deceleration Rates	50-100 rpm/sec ≤ 30 secs
Operating Times	1-99 minutes
Power	100 to 240 VAC, - 10%, 50 or 60 Hz
Dimensions (H x W x D)	<ul style="list-style-type: none"> 20.3 cm x 33.0 cm x 40.6 cm (8.0 in. x 13 in. x 17 in.)
Weight	<ul style="list-style-type: none"> 22 lbs (10.0 kg)

Ordering Information - Filter Concentrators

FF01	CytoFuge Filter Concentrators 48/box
FFCL	Replacement Filter Clips 4/bag
FFR1	Reusable Filter Concentrators 20 plastic concentrators and 200 filter cards

Cell Concentrators

CC01	1-well with gaskets 10/box
CC03	3-well with gaskets 10/box
CCR1	Autoclavable 1-well with gaskets 10/box
CCR3	Autoclavable 3-well with gaskets 10/box

Replacement Silicone Gaskets

GK01	1-well 100/bag
GK03	3-well 100/bag

Product

CF12	CytoFuge 12 Cytocentrifuge for 100-240 V, 50/60 Hz. 12-place rotor with lid and samples of accessories. 1 year Warranty
------	--



Accessories

CLIP	Replacement Stainless Steel Clips 10/bag
BP01	Replacement Backing Plates 10/bag



60 Glacier Drive
Westwood, MA 02090
Tel: 781.551.0100
Fax: 781.551.0036
800-782-8774